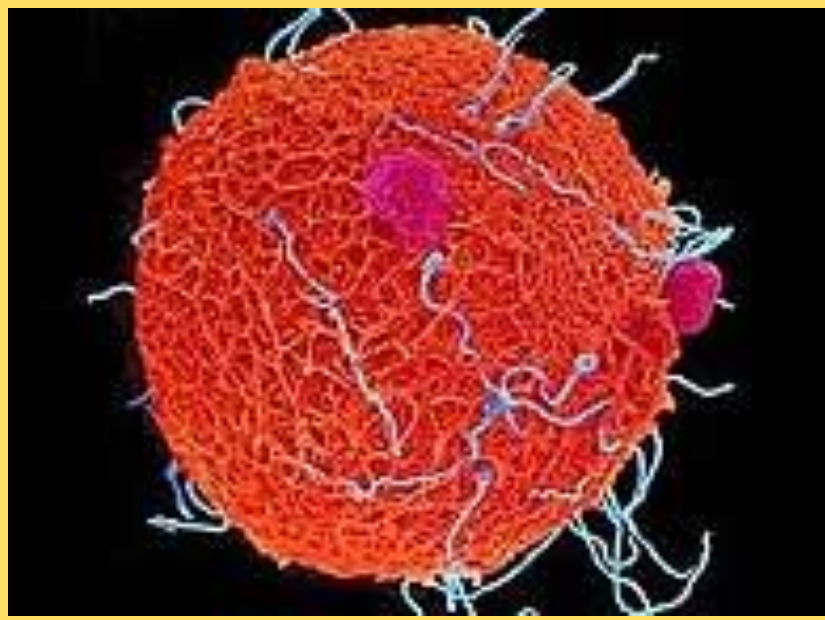


UNIVERSIDADE FEDERAL DO ESPÍRITO SANTO
CENTRO UNIVERSITÁRIO NORTE DO EPÍRITO SANTO

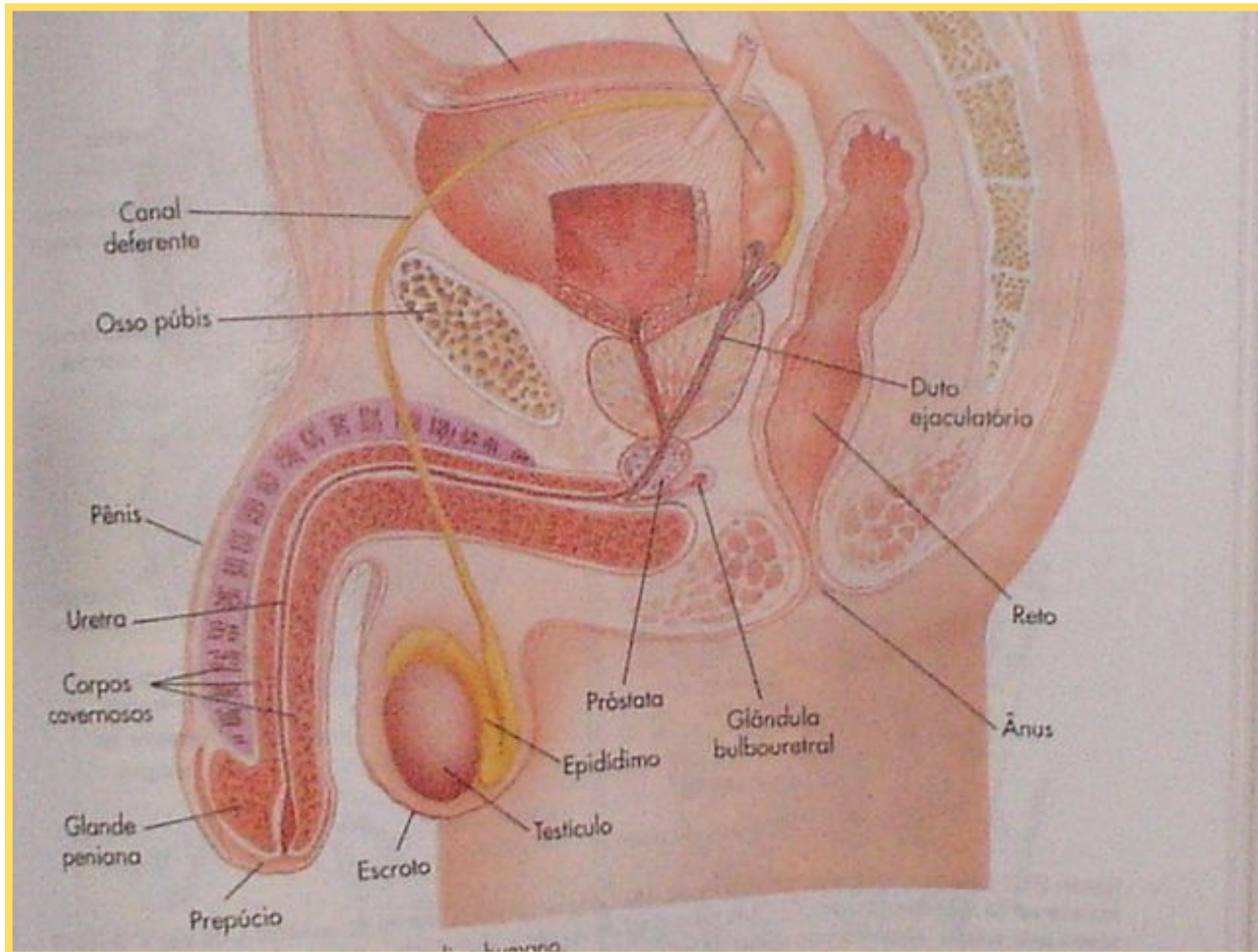
Sistema Genital Masculino

PROFESSORA ROBERTA PARESQUE

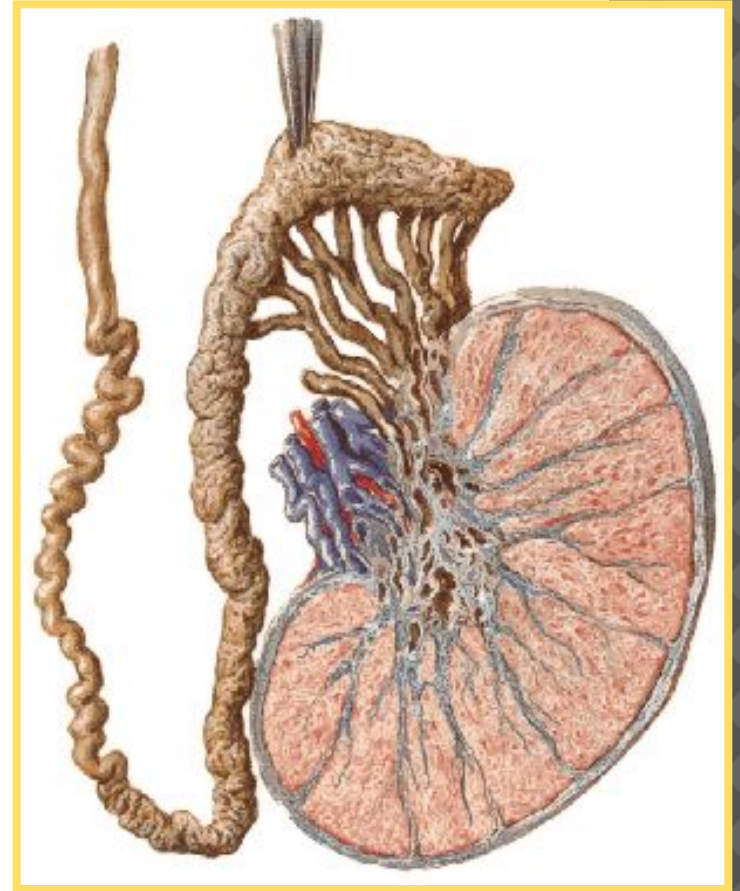
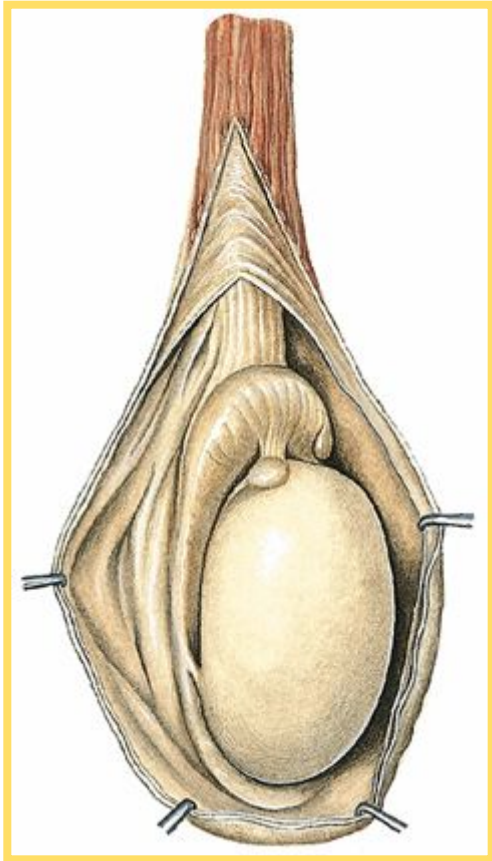
SISTEMA GENITAL MASCULINO



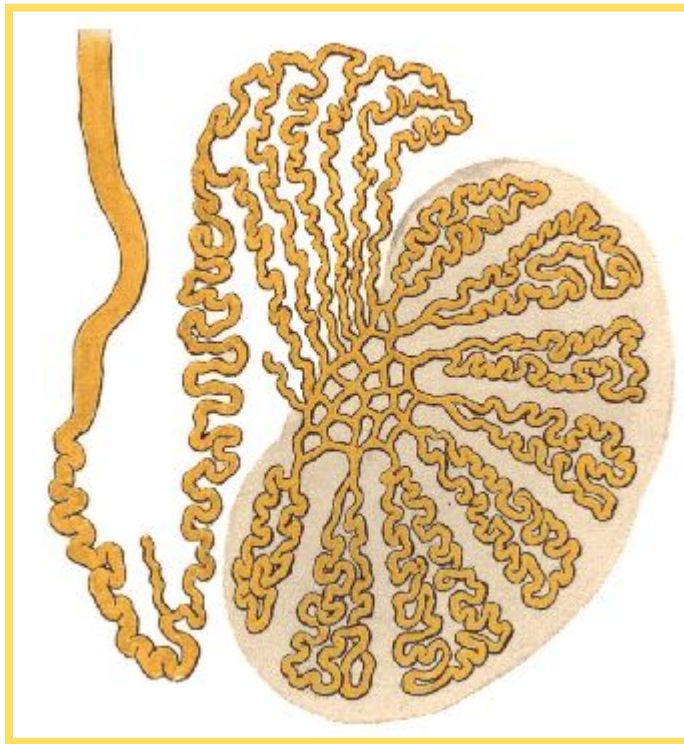
ÓRGÃOS GENITAIS MASCULINOS



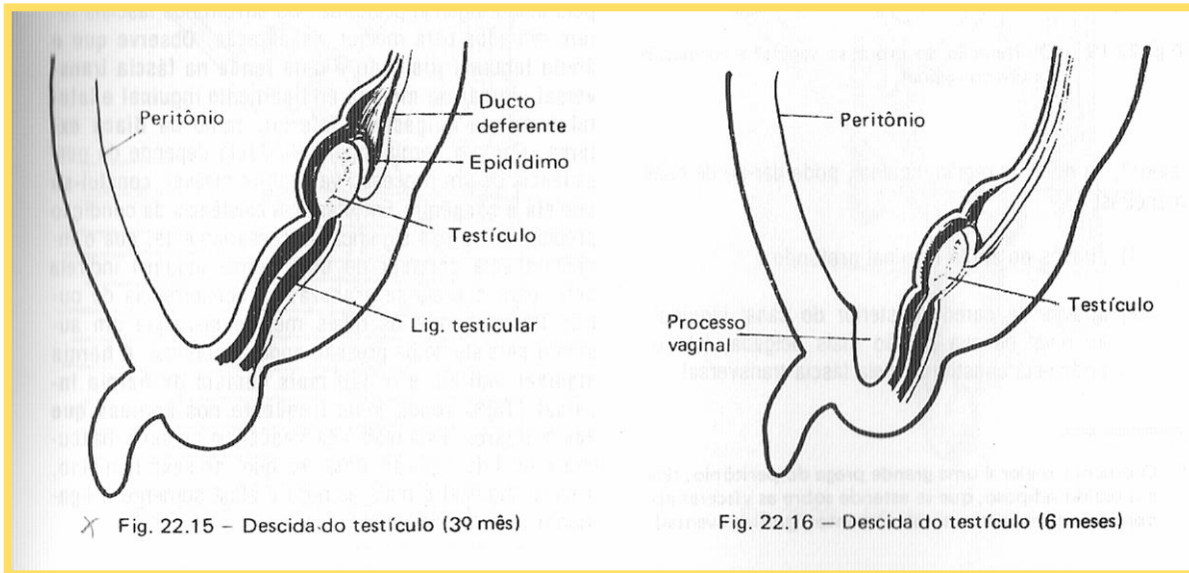
TESTÍCULO



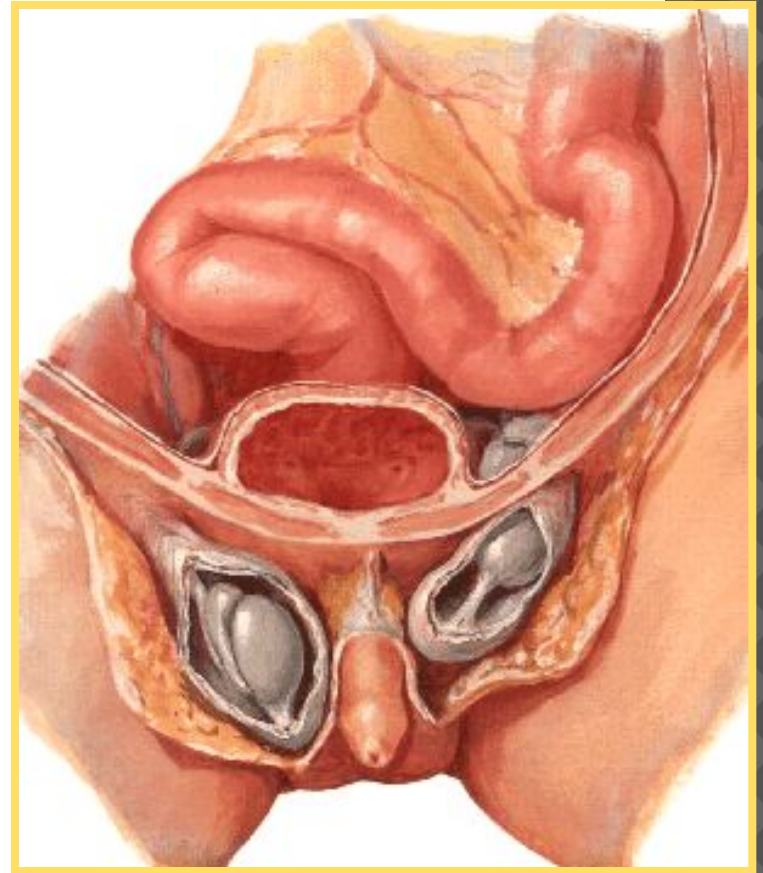
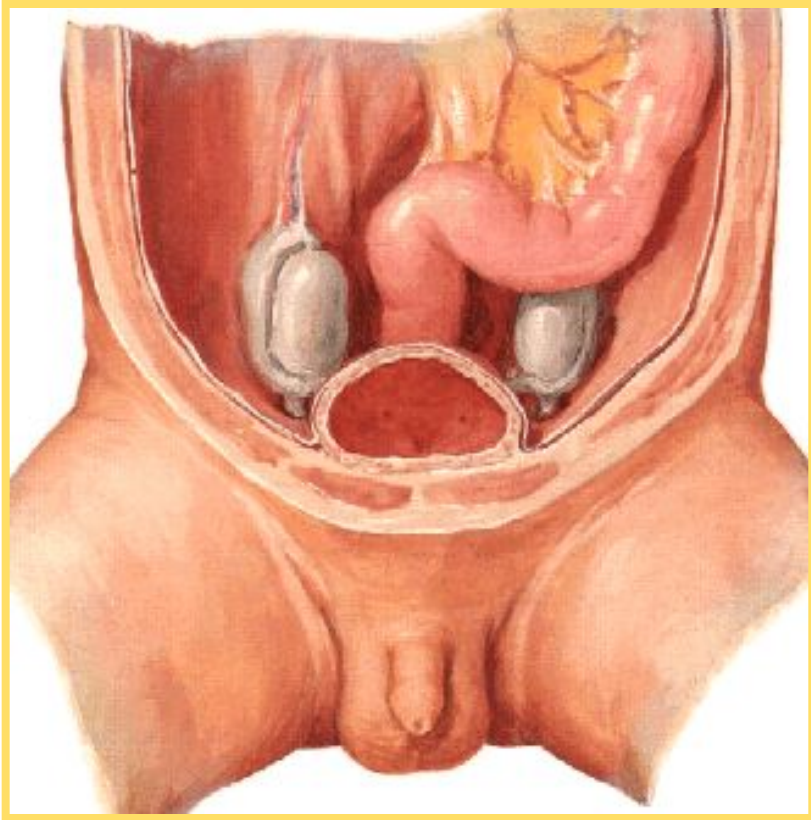
TESTÍCULO



DESCIDA DO TESTÍCULO



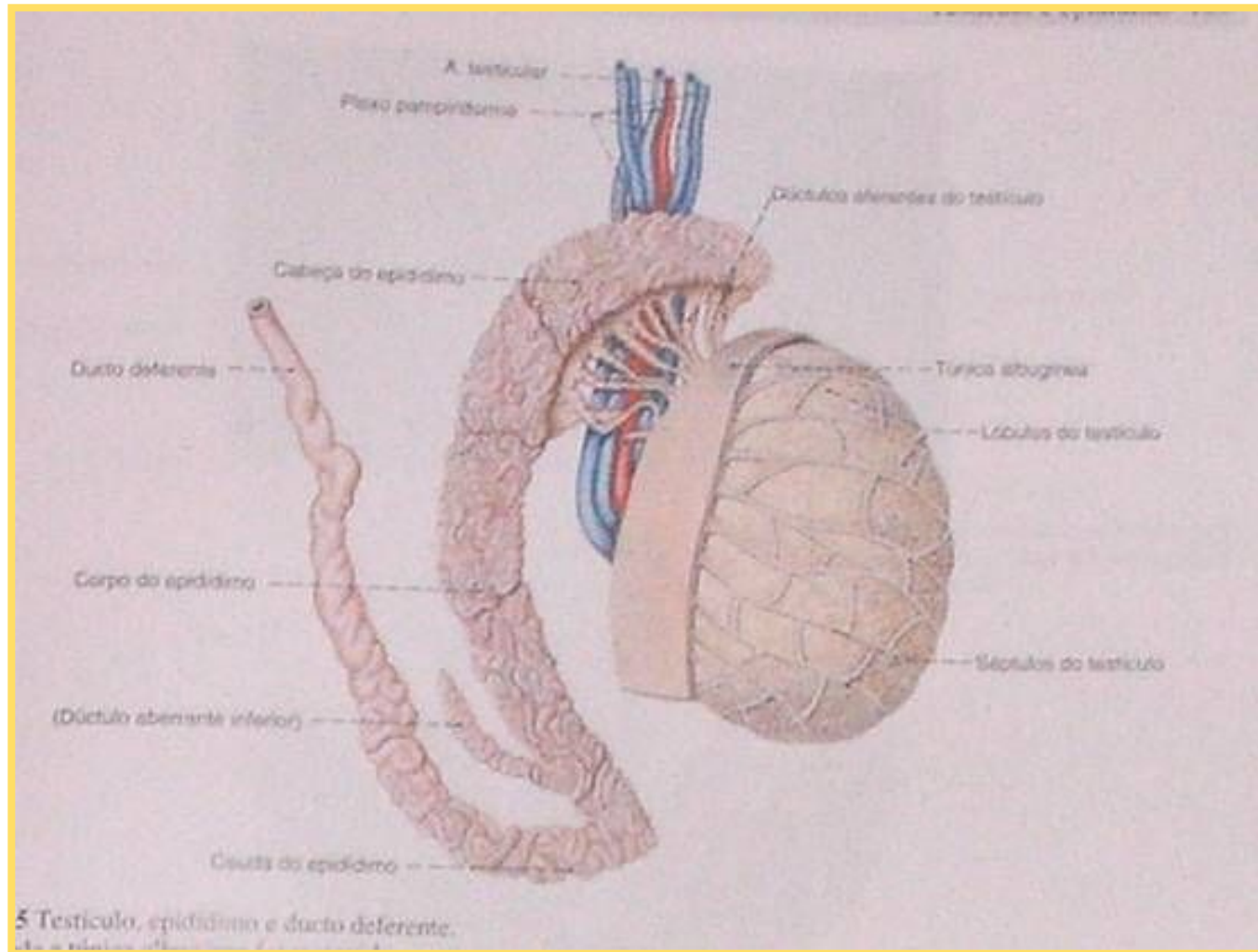
TESTÍCULO



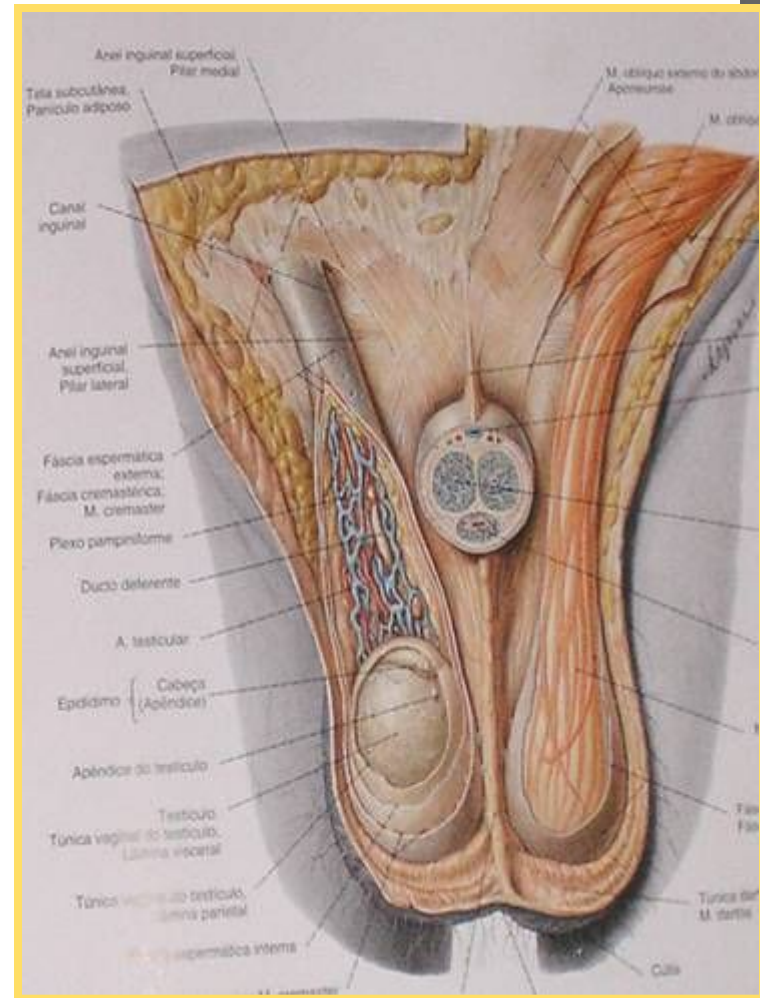
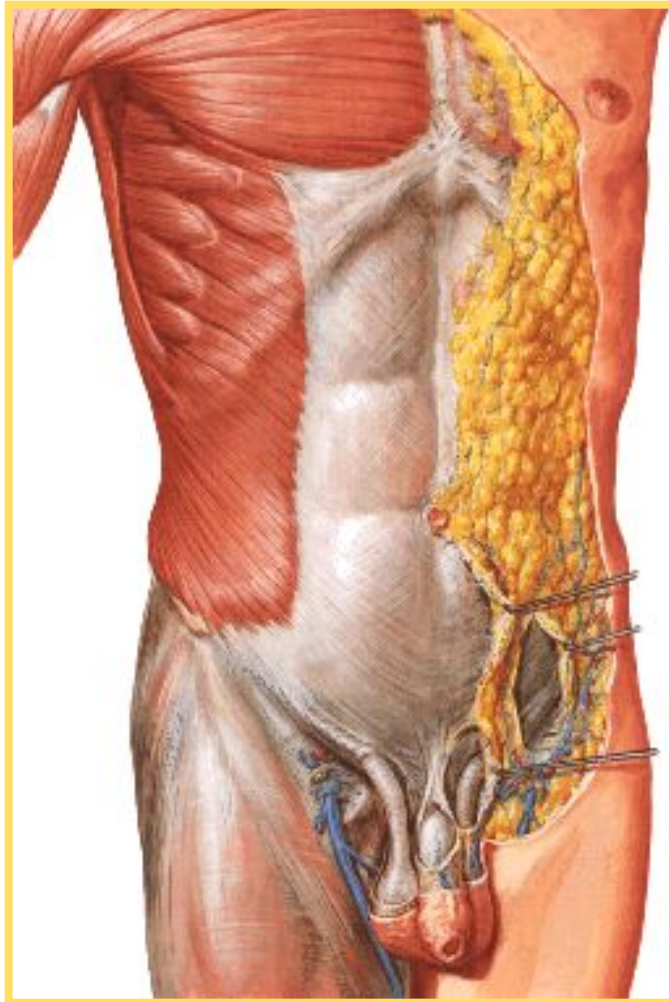
HÉRNIAS INGUINAIS INDIRETAS



EPIDÍDIMO



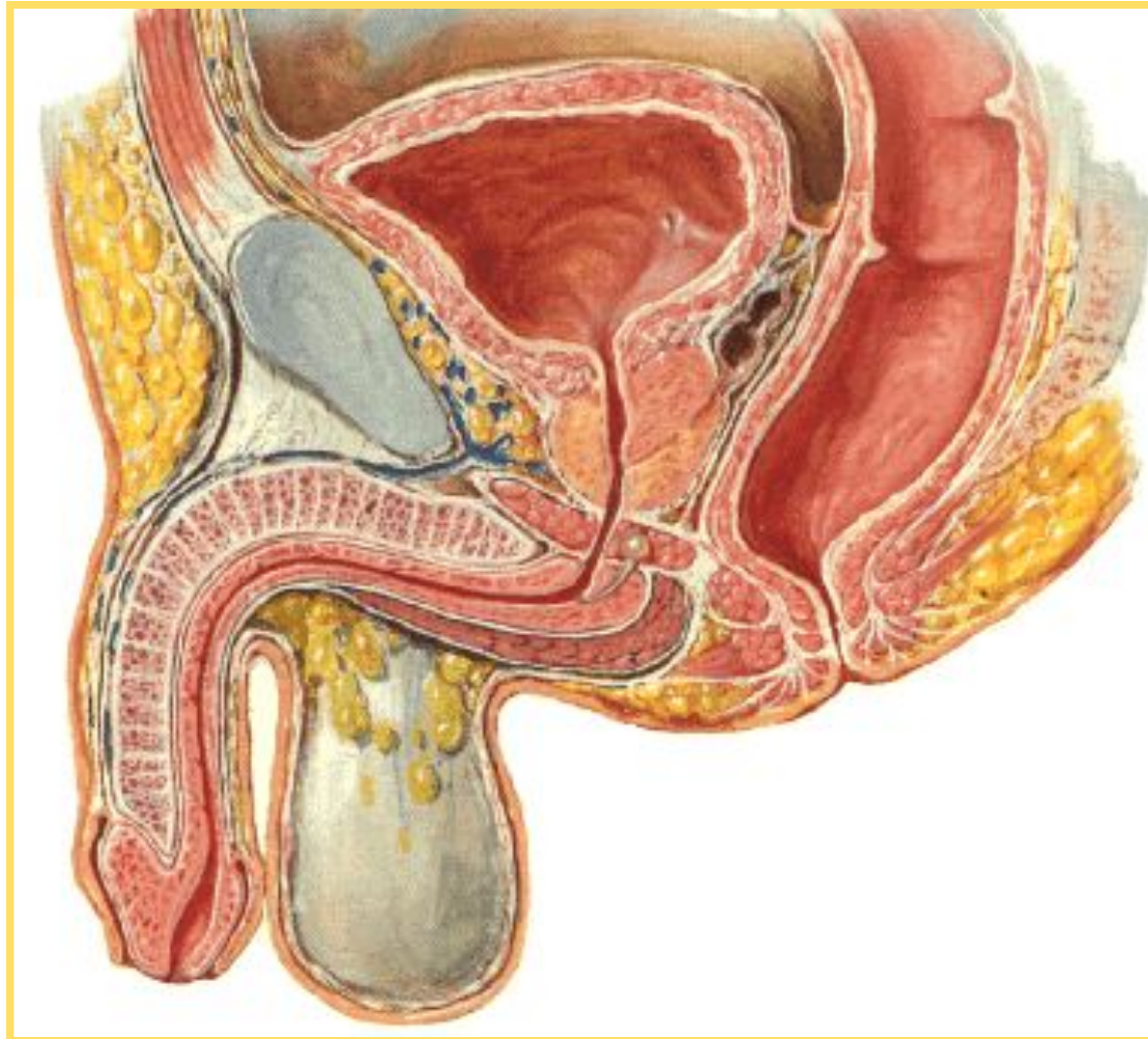
FUNÍCULO ESPERMÁTICO



DUCTO EJACULATORIO

- ◉ Formado: ducto deferente + ducto da vesícula seminal
- ◉ Conduz espermatozoides até a parte prostática da uretra

URETRA



URETRA



URETRA PROSTÁTICA

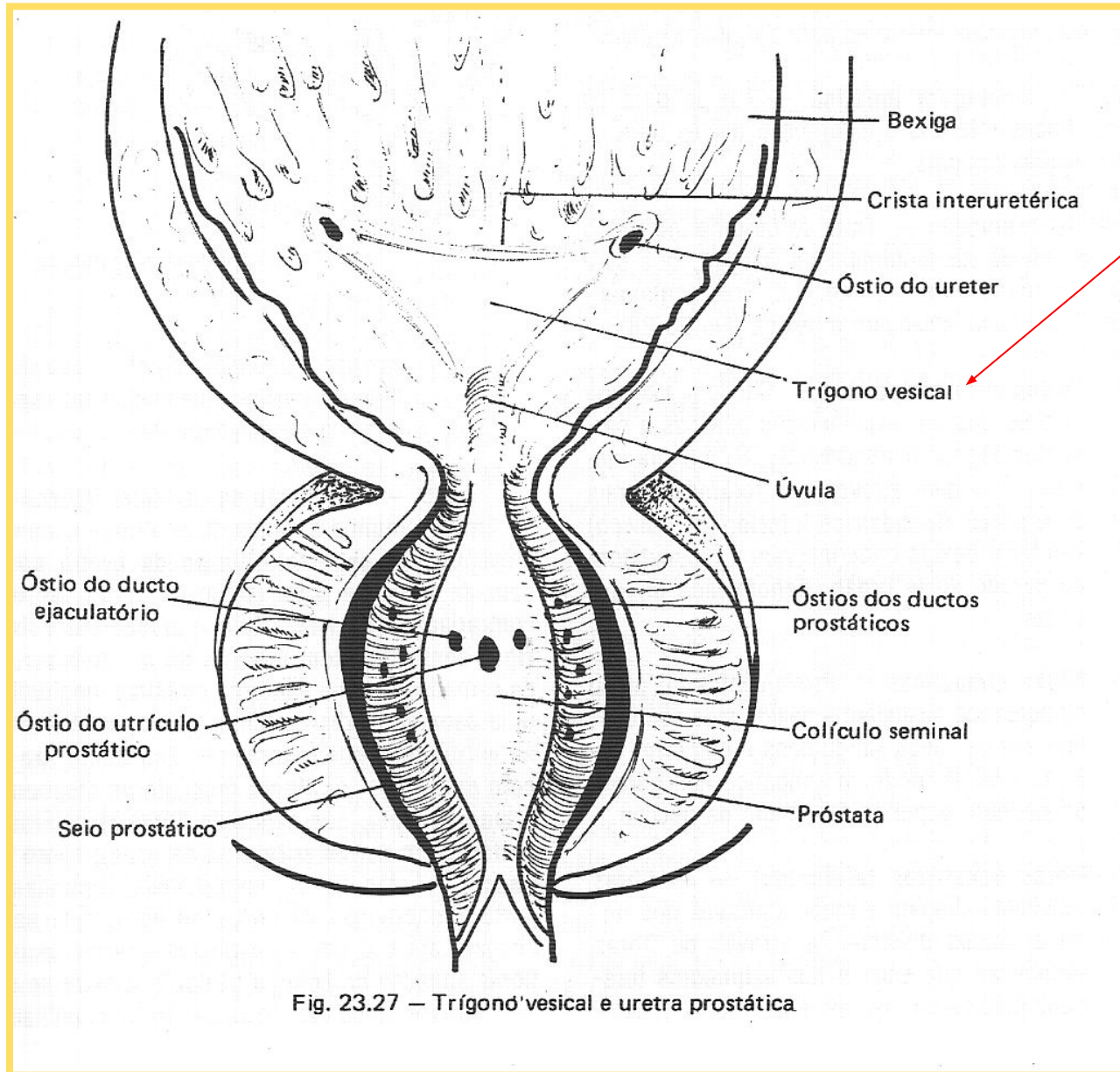
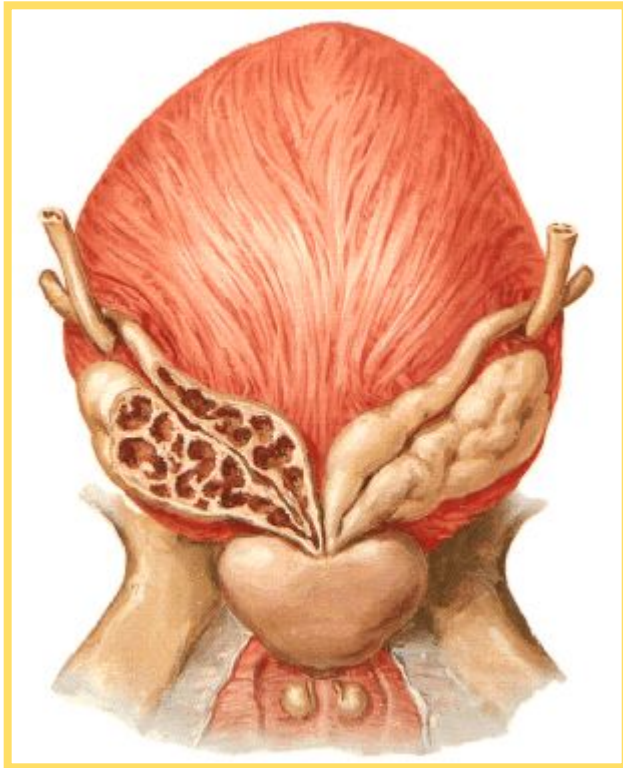
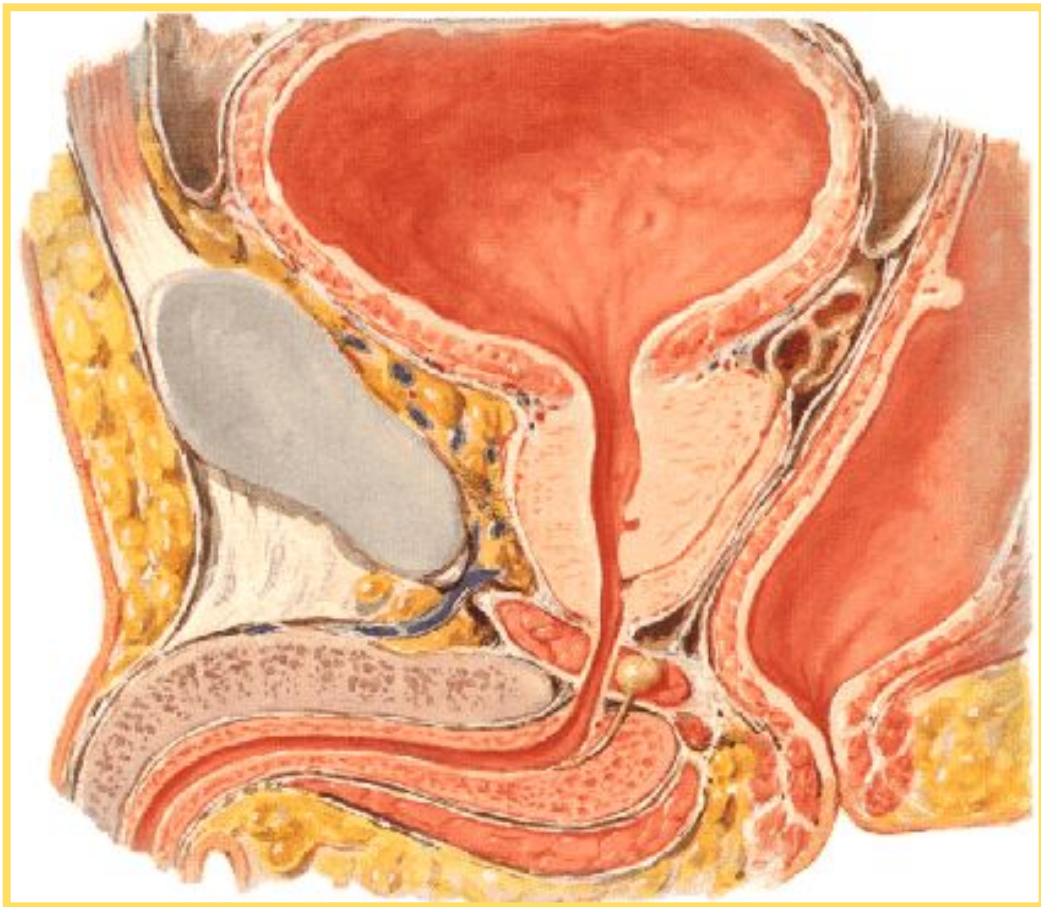


Fig. 23.27 – Trígono vesical e uretra prostática.

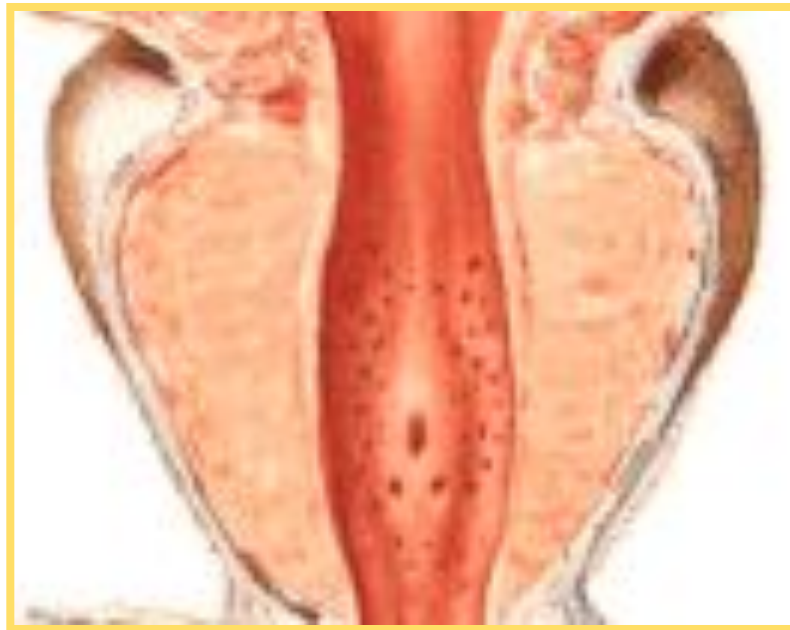
VESÍCULAS SEMINAIS



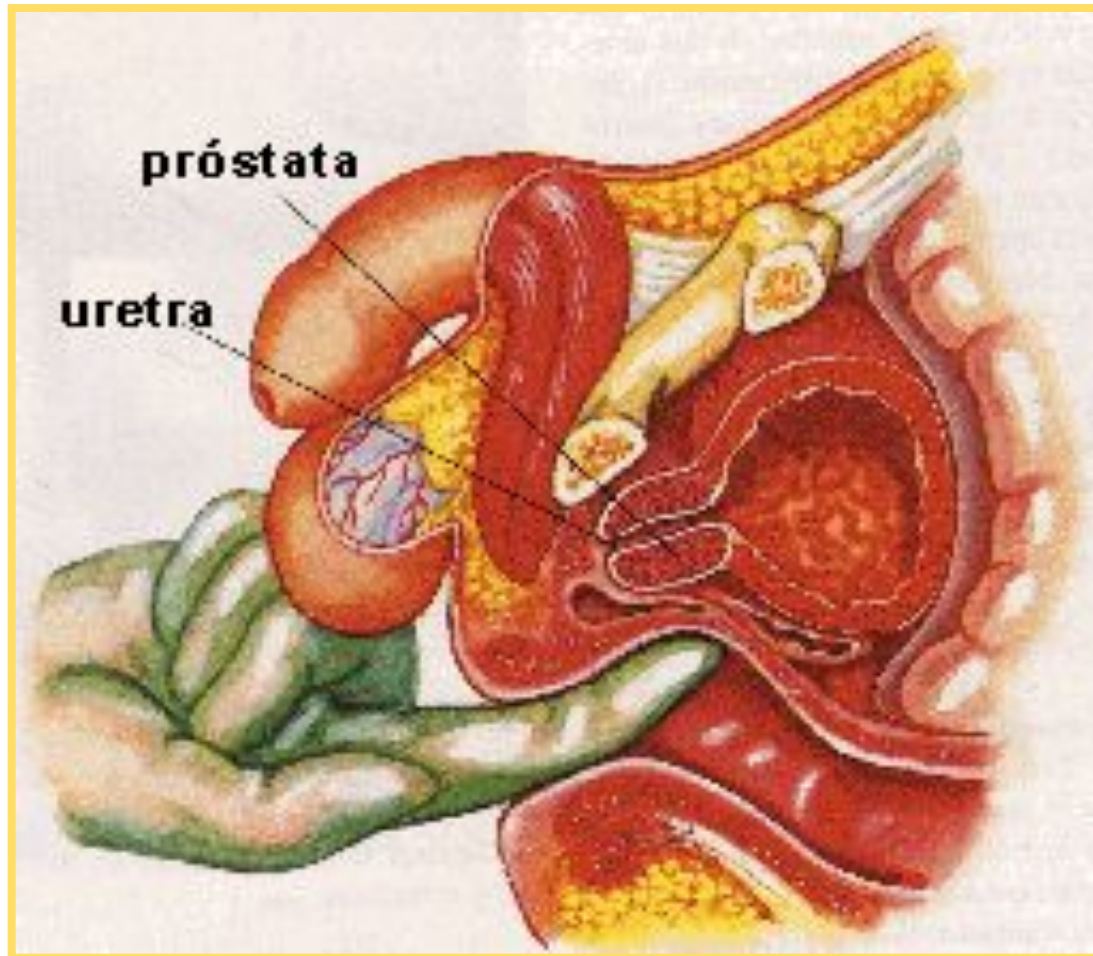
PRÓSTATA



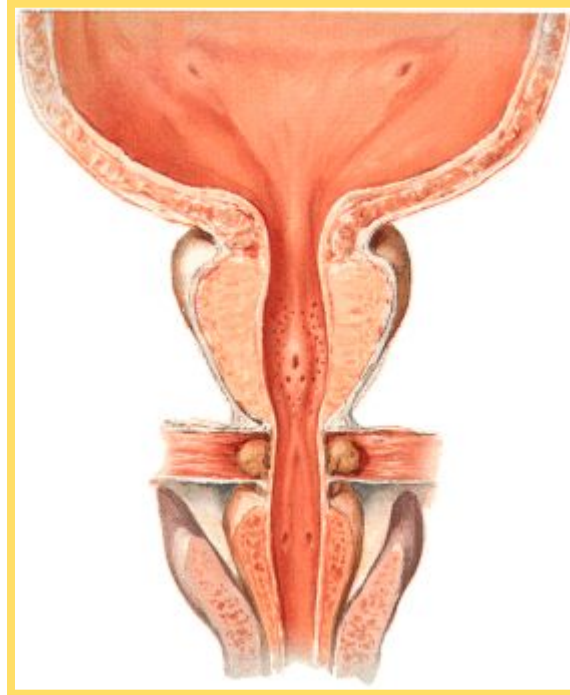
PRÓSTATA



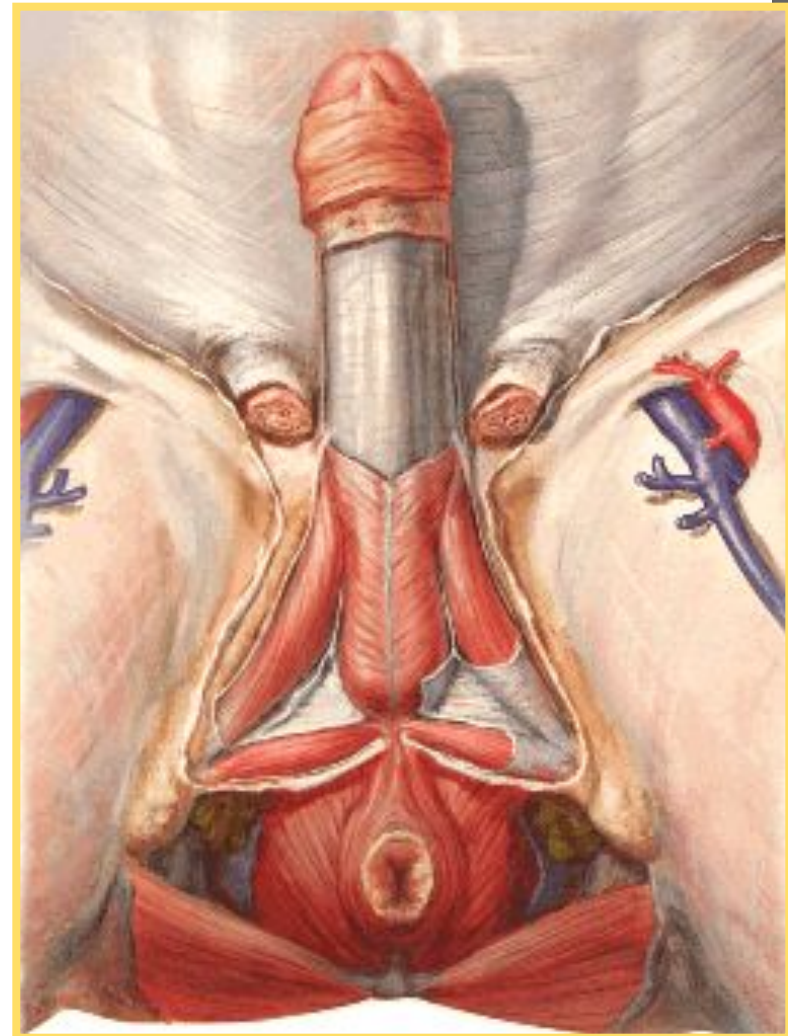
EXAME DE TOQUE RETAL



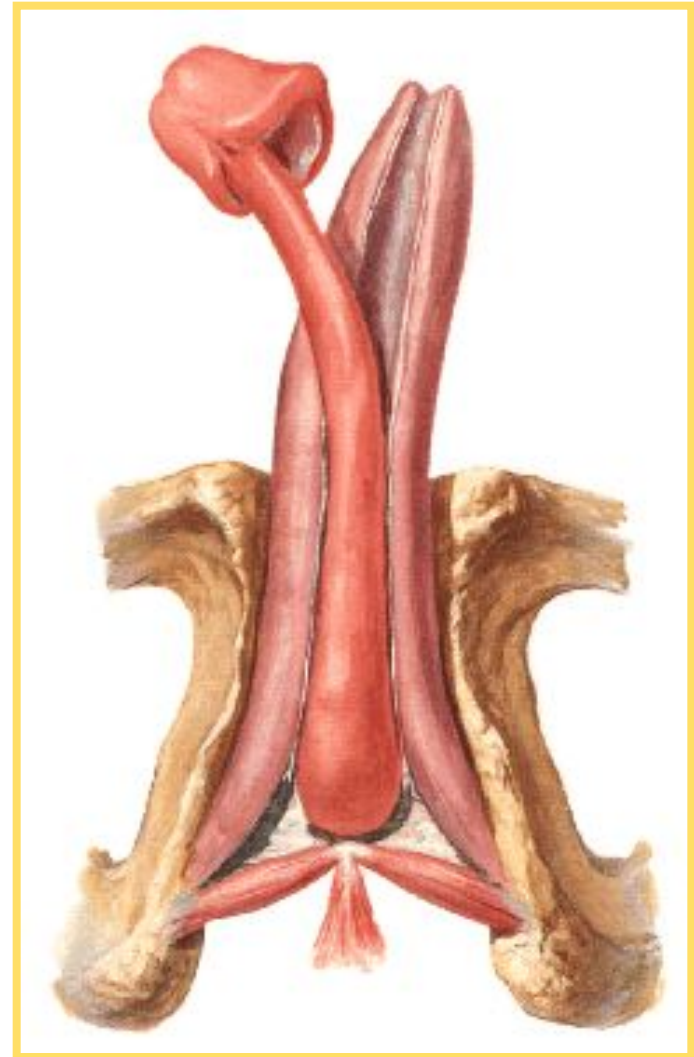
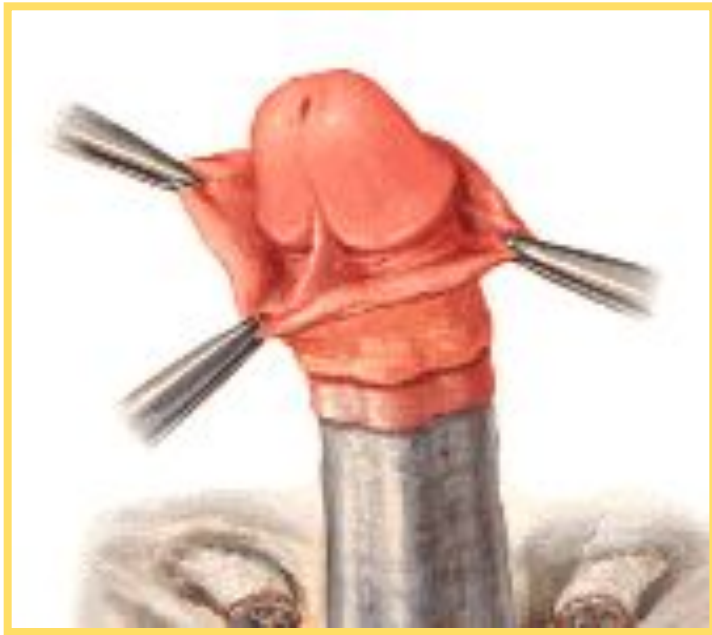
GLÂNDULAS BULBO-URETRAIS



PÊNIS



PÊNIS



ESCROTO

