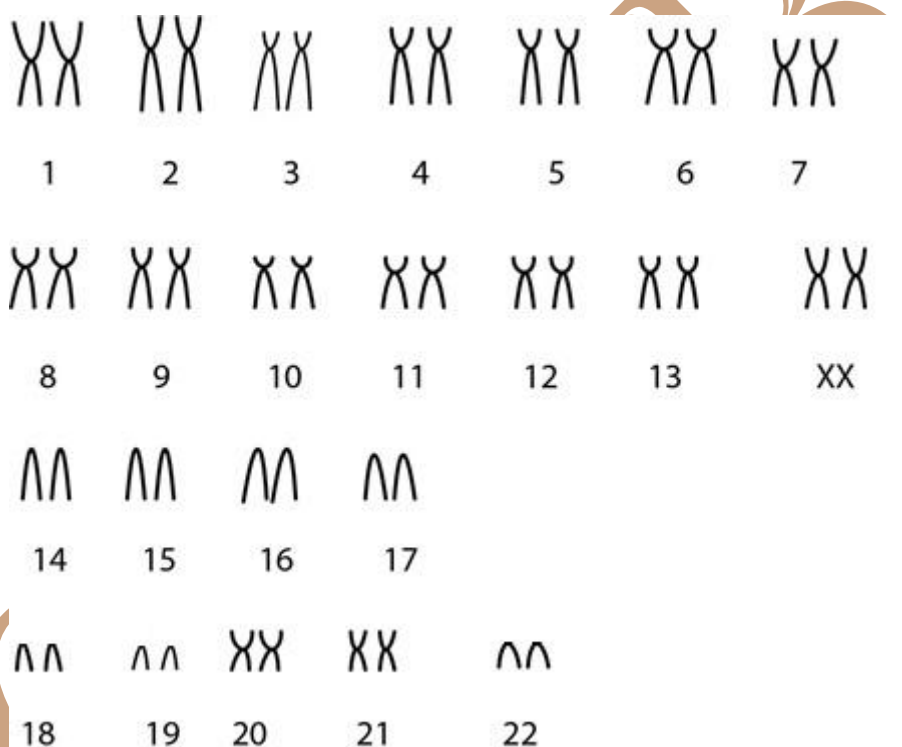


Saguinus midas (Spix, 1823)

Cariótipo de Nagamachi & Pieczarka (1988)

2n	NF	Cromossomo X	Cromossomo Y	Localidade
46	74	Submetacêntrico	Acrocêntrico	Tucuruí, PA (Brasil)

Coloração



*Imagem disponível em Schmid & Glaser (1977)

Referência

NAGAMACHI, Cleusa Yoshiko; PIECZARKA, Julio Cesar. Chromosome studies of *Saguinus midas niger* (Callithricidae, Primates) from Tucuruí, Para, Brazil: comparison with the karyotype of *Callithrix jacchus*. **American Journal of Primatology**, v. 14, n. 3, p. 277-284, 1988.

SCHMID, W.; GLASER, D. The banded karyotype of *Saguinus midas* tamarin Link, 1795 (Callitrichidae, Primates). **Folia Primatologica**, v. 28, n. 2, p. 154-158, 1977.

Link

<https://onlinelibrary.wiley.com/doi/abs/10.1002/ajp.1350140308>

<https://www.karger.com/Article/PDF/155805>

CIMAB