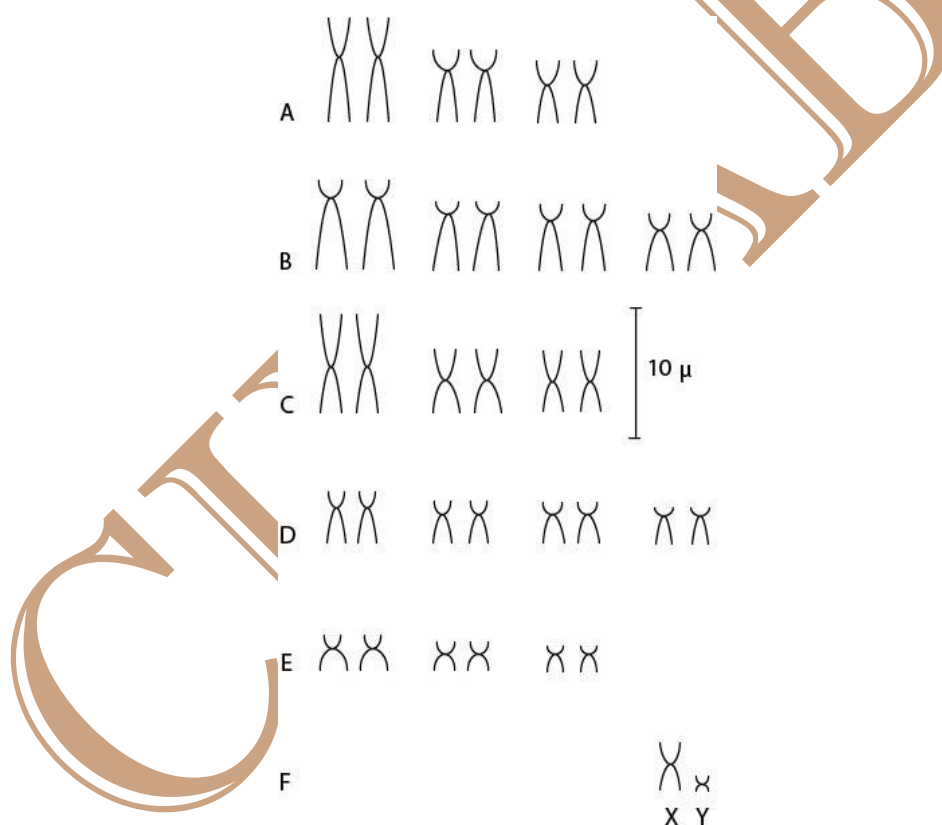


Puma yagouaroundi (É. Geoffroy, 1803)

Cariótipo de Wurster & Benirschke (1968)

2n	NF	Cromossomo X	Cromossomo Y
38	76	Submetacêntrico médio	Submetacêntrico pequeno

Coloração Comum



Referência

WURSTER, D. H.; BENIRSCHKE, K. Comparative cytogenetic studies in the order Carnivora. **Chromosoma**, v. 24, n. 3, p. 336-382, 1968.

Link

<https://link.springer.com/article/10.1007/BF00336201>