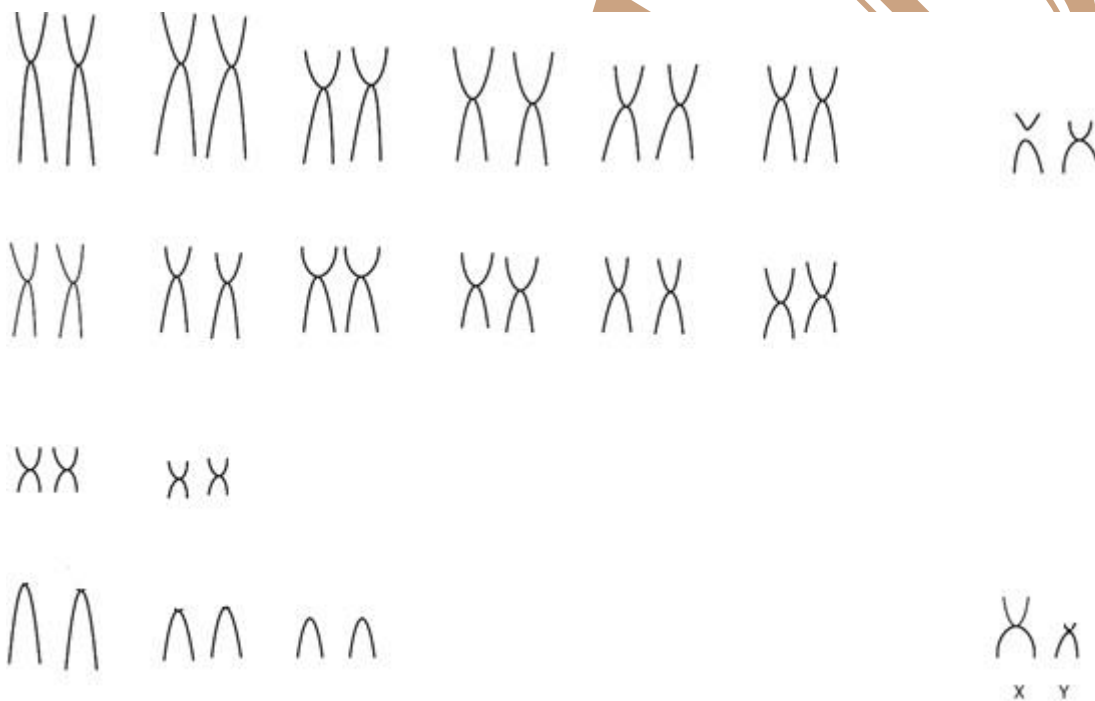


# *Nasua nasua* (Linnaeus, 1766)

Cariótipo de Wurster & Benirschke, 1968

2n	NF	Cromossomo X	Cromossomo Y
38	68	Submetacêntrico médio	Subacrocêntrico pequeno

Coloração



Referência

WURSTER, D. H.; BENIRSCHKE, K. Comparative cytogenetic studies in the order Carnivora. **Chromosoma**, v. 24, n. 3, p. 336-382, 1968.

Link

<https://link.springer.com/content/pdf/10.1007%2F0336201.pdf>