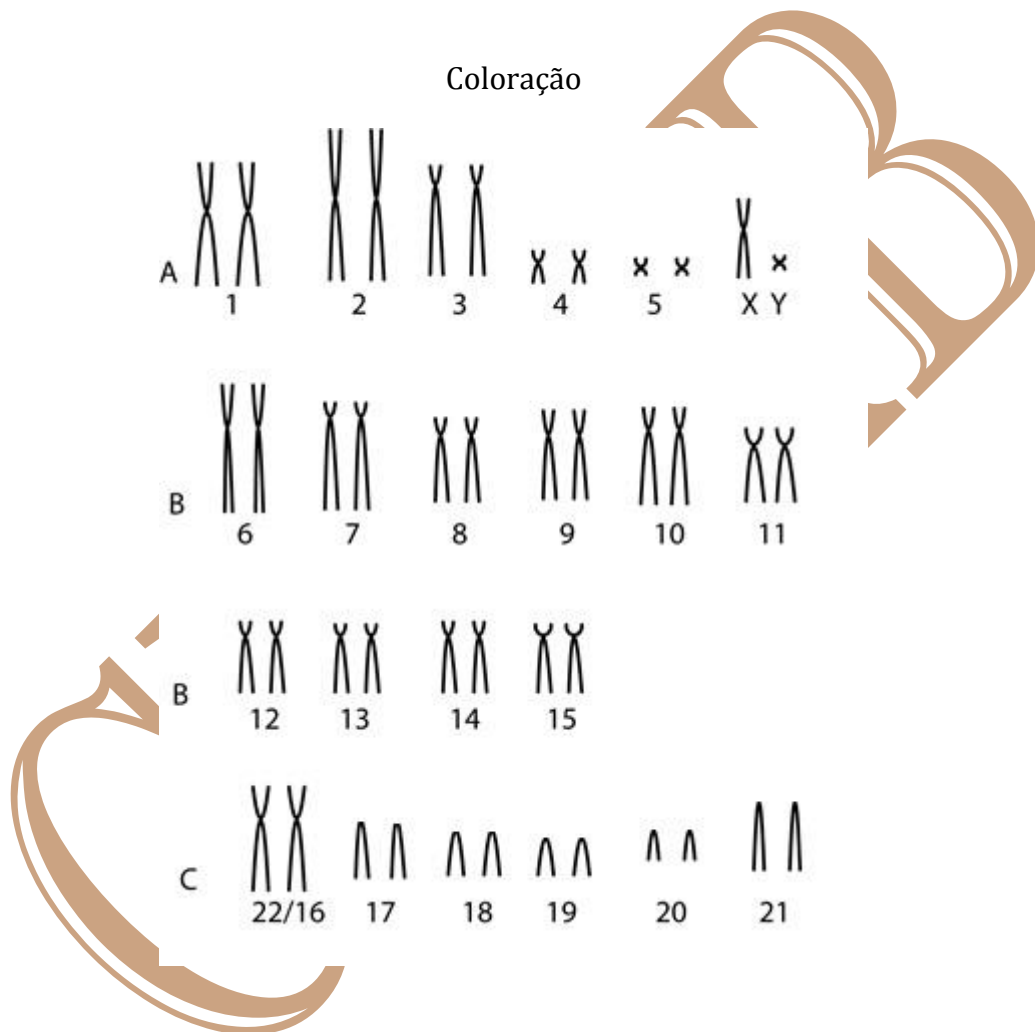


Mico emiliae (Thomas, 1920)

Cariótipo de Barros et al. (1990)

2n	NF	Cromossomo X	Cromossomo Y	Localidade	Coordenada
44	74	Submetacêntrico grande	Metacêntrico pequeno	Margens do Rio Jamari - RO	63°30' W, 9°00' S



Referência

DE SOUZA BARROS, Regina Maria; NAGAMACHI, Cleusa Yoshiko; PIECZARKA, Julio Cesar. Chromosomal evolution in *Callithrix emiliae*. **Chromosoma**, v. 99, n. 6, p. 440-447, 1990.

Link

<https://link.springer.com/article/10.1007/BF01726697>