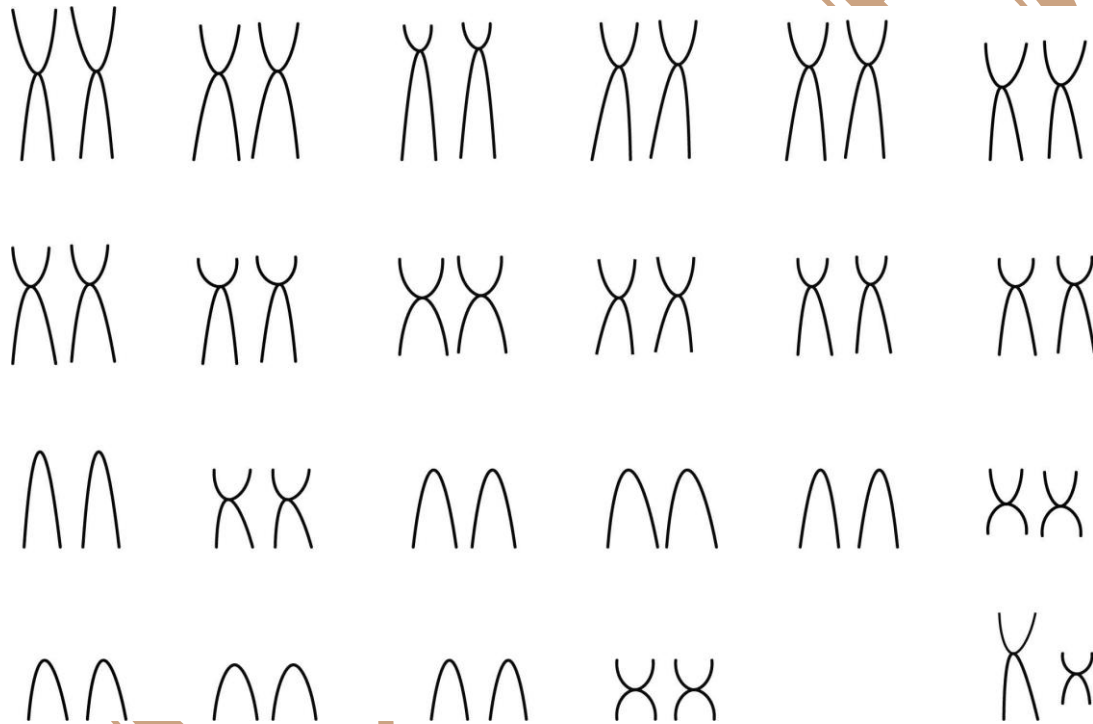


Leontopithecus rosalia (Linnaeus, 1766)

Cariótipo de Nagamachi et al. 1997

2n	NF	Cromossomo X	Cromossomo Y	Localidade
46	74	Submetacêntrico	Subtelocêntrico	Brasil

Coloração



*Imagem disponível em Benirschke et al. 1962

Referência

BENIRSCHKE, Kurt; ANDERSON, John M.; BROWNHILL, Lydia E. Marrow chimerism in marmosets. **Science**, v. 138, n. 3539, p. 513-515, 1962.

NAGAMACHI, Cleusa Y. et al. Chromosomal similarities and differences between tamarins, *Leontopithecus* and *Saguinus* (Platyrrhini, Primates). **American journal of primatology**, v. 43, n. 3, p. 265-276, 1997.

Link

<http://science.sciencemag.org/content/138/3539/513>

[https://onlinelibrary.wiley.com/doi/abs/10.1002/\(SICI\)1098-2345\(1997\)43:3%3C265::AID-AJP6%3E3.0.CO;2-V](https://onlinelibrary.wiley.com/doi/abs/10.1002/(SICI)1098-2345(1997)43:3%3C265::AID-AJP6%3E3.0.CO;2-V)

CIMAB