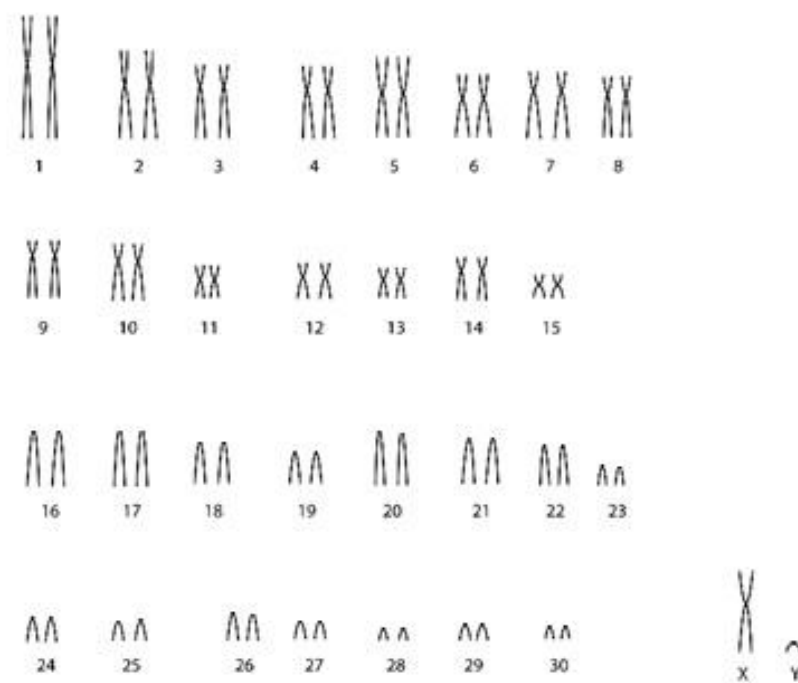


# *Lagothrix lagothricha* (Humboldt, 1812)

Cariótipo de Stanyon et al. (2001)

2n	NF	Cromossomo X	Cromossomo Y	Localidade	Coordenada
62	88	Submetacêntrico médio	Acrocêntrico pequeno	Coriell Institute for Medical Research (EUA)	39°56'26.3"N 75°06'53.5"W

Coloração Comum



\*Imagem disponível em Clemente et al. 1987

## Referência

CLEMENTE, I. C. et al. High-resolution chromosome banding studies in *Cebus apella*, *Cebus albifrons*, and *Lagothrix lagothricha*: Comparison with the human karyotype. **American Journal of Primatology**, v. 13, n. 1, p. 23-36, 1987.

STANYON, R. et al. Reciprocal chromosome painting between a New World primate, the woolly monkey, and humans. **Chromosome Research**, v. 9, n. 2, p. 97-106, 2001.

Link

<https://onlinelibrary.wiley.com/doi/abs/10.1002/ajp.1350130105>

<https://link.springer.com/article/10.1023/A:1009274802086>

CIMAB