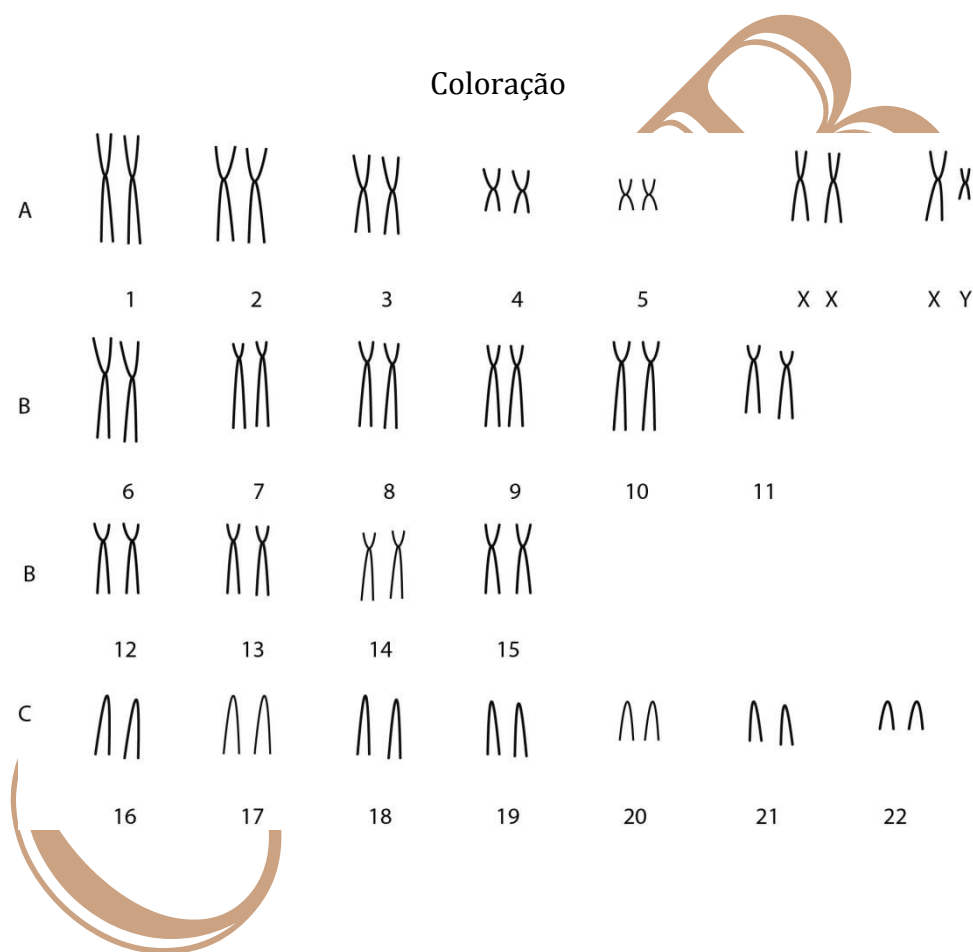


Callithrix geoffroyi (E. Geoffroy in Humboldt, 1812)

Cariótipo de Nagamachi *et al.* (1997)

2n	NF	Cromossomo X	Cromossomo Y	Localidade	Coordenada
46	74	Submetacêntrico médio	Metacêntrico	Centro Nacional de Primatologia do Rio de Janeiro	22°29'17.0"S, 42°54'48.4"W

Coloração



Referência

Nagamachi, C. Y., Pieczarka, J. C., Schwarz, M., Barros, R. M., & Mattevi, M. S. (1997). Comparative chromosomal study of five taxa of genus *Callithrix*, group jacchus (Platyrrhini, Primates). *American journal of primatology*, 41(1), 53-60.

Link

<https://onlinelibrary.wiley.com/doi/pdf/10.1002/%28SICI%291098-2345%281997%2941%3A1%3C53%3A%3AAID-AJP5%3E3.0.CO%3B2-Z>