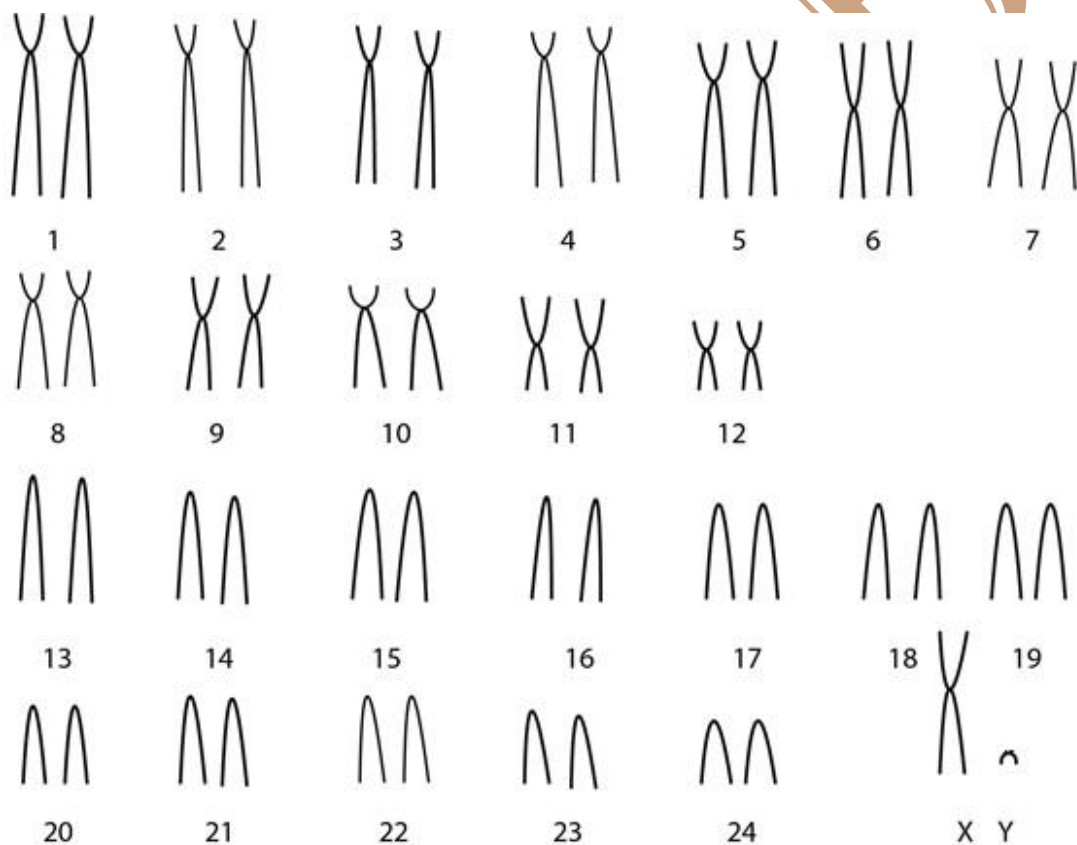


Callicebus moloch (Hoffmannsegg, 1807)

Cariótipo de Egozcue et al. (1969); Pieczarka & Nagamachi (1988) e Stanyon et al. (2000)

2n	NF	Cromossomo X	Cromossomo Y
46, 48 e 50	64, 66 e 72	Submetacêntrico grande	Acrocêntrico pequeno

Coloração



*Coloração disponível em Stanyon et al. (2000)

Referência

EGOZCUE, Josep et al. The chromosomes of some platyrrhini (*Callicebus*, *Ateles* and *Saimiri*). **Folia primatologica**, v. 11, n. 1-2, p. 17-27, 1969.

PIECZARKA, Julio Cesar. The karyotype of *Callicebus moloch moloch* (Cebidae, Primates). **Rev. Brasil. Genet.**, v. 11, n. 3, p. 653-659, 1988.

STANYON, R. et al. Fluorescence in situ hybridization (FISH) maps chromosomal homologies between the dusky titi and squirrel monkey. **American Journal of Primatology: Official Journal of the American Society of Primatologists**, v. 50, n. 2, p. 95-107, 2000.

Link

<https://www.karger.com/Article/Abstract/155256>

<https://ci.nii.ac.jp/naid/10016053631/>

[https://onlinelibrary.wiley.com/doi/abs/10.1002/\(SICI\)1098-2345\(200002\)50:2%3C95::AID-AJP1%3E3.0.CO;2-8](https://onlinelibrary.wiley.com/doi/abs/10.1002/(SICI)1098-2345(200002)50:2%3C95::AID-AJP1%3E3.0.CO;2-8)

CIMAB