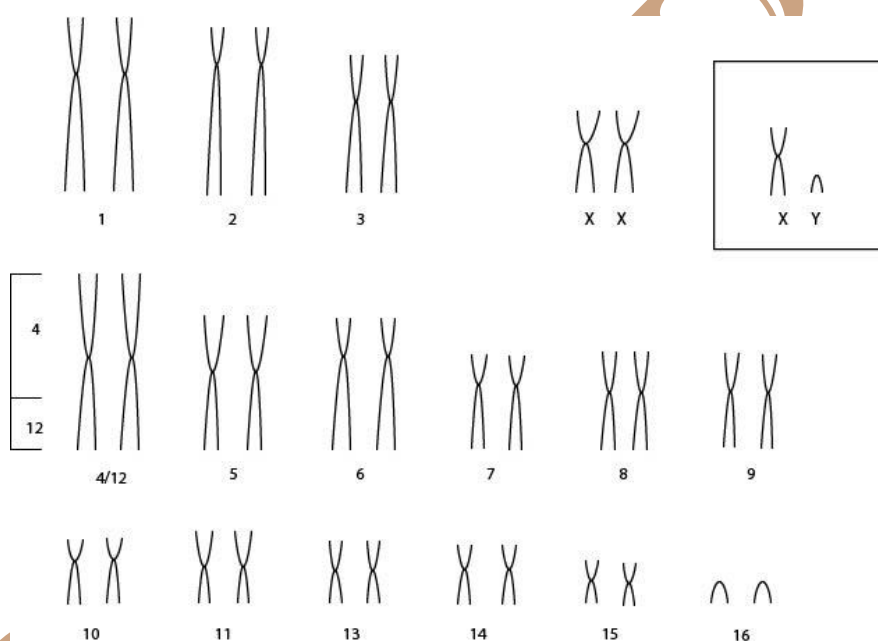


# *Ateles pascinus* (Linnaeus, 1758)

Cariótipo de Pieczarka *et al.* (1989)

2n	NF	Cromossomo X	Cromossomo Y	Localidade	Coordenada
32	58	Metacêntrico	Acrocêntrico	Rios Jari e Uatumã – AM (Brasil)	0°32'S;52°40'W; 1°54'S;59°28'W

Coloração



Referência

Pieczarka, J. C. (1989). The karyotype of *Ateles paniscus paniscus* (Cebidae, Primates):  $2n = 32$ . *Rev Brasil Genet*, 12, 543-551.

Link

<https://ci.nii.ac.jp/naid/10016622761/>