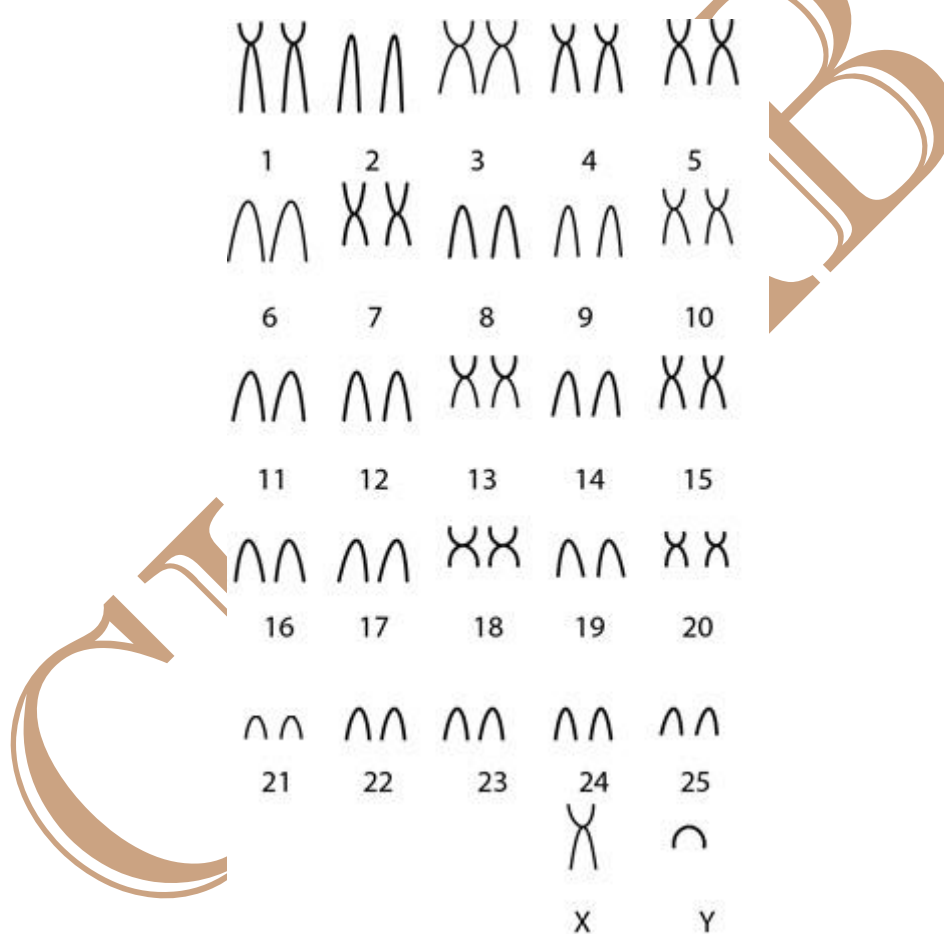


Alouatta caraya (Humboldt, 1812)

Cariótipo de Egozcue & De Egozcue (1966)

2n	NF	Cromossomo X	Cromossomo Y	Localidade
52	70	Submetacêntrico	Acrocêntrico	Norte da Argentina

Coloração



Referência

Egozcue, J., & De Egozcue, V. (1966). The chromosome complement of the howler monkey (*Alouatta caraya*, Humboldt 1812). *Cytogenetic and Genome Research*, 5(1-2), 20-27.

Link

<https://www.karger.com/Article/Abstract/129881>