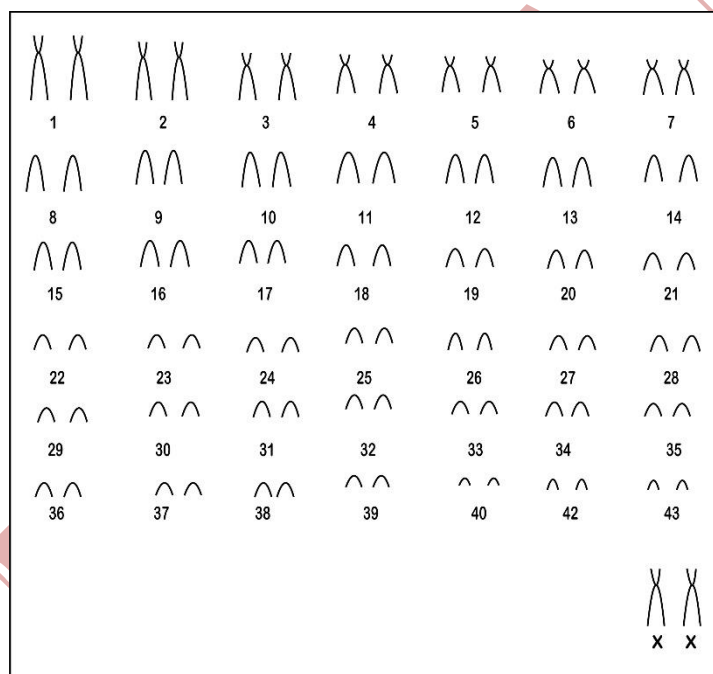


Zygodontomys brevicauda (J. A. Allen & Chapman, 1893)

Modified karyotype from Mattevi *et al.* (2002)

2n	FN	X Chromosome	Y Chromosome	Locality	Coordinate
86	100	Large Submetacentric	Medium Subtelocentric	Surumú – RR, Farm São Bento, Tartarugalzinho – AM (Brazil)	3°58' – 4°27'N e 60°13' – 61°16'W 01°17'N; 50°48'W

Conventional staining



*G-banding available in Mattevi *et al.* (2002)

Reference

Mattevi, M. S.; Haag, T.; Nunes, A. P.; Oliveira, L. F. B.; Cordeiro, J. L. P.; Andrades – Miranda, J. 2002. **Karyotypes of Brazilian Representatives of Genus *Zygodontomys* (Rodentia, Sigmodontinae)**. *Mastozoologia Neotropical* / *J. Neotrop. Mammal.*; 9(1):33-38.

Link

http://www.sarem.org.ar/wp-content/uploads/2012/11/SAREM_MastNeotrop_9-1_04_Mattevi.pdf