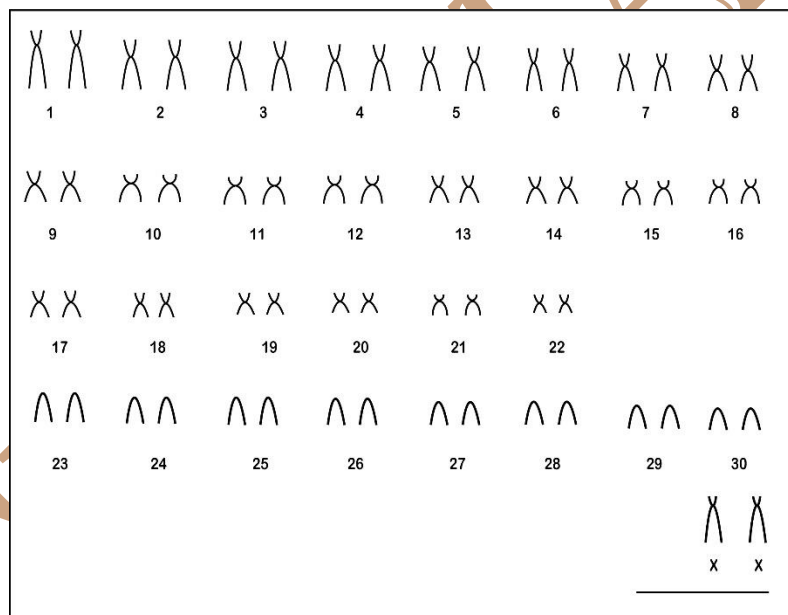


Wiedomys pyrrhorhinus (Wied-Neuwied, 1821)

Modified karyotype from Souza *et al.* (2011)

2n	FN	X Chromosome	Y Chromosome	Locality	Coordinate
62	104	Large Acrocentric * * in the female one of the X chromosomes appeared as small subtelocentric.	Small Acrocentric	Farm Salinas, Morro do Chapéu (Chapada Diamantina)- BA (Brazil)	11°18'45.7"S, 41°15'04.0"W

Conventional staining (Scale: 10 µm)



*C-banding and G-banding available in Souza *et al.* (2011)

Reference

Souza, A. L. G.; Corrêa, M. M. O.; Aguilar, C. T.; Pessôa, L. M. 2011. **A new karyotype of *Wiedomys pyrrhorhinus* (Rodentia: Sigmodontinae) from Chapada Diamantina, northeastern Brazil.** ZOOLOGIA 28 (1): 92-96.

Link

<http://www.scielo.br/pdf/zool/v28n1/v28n1a13.pdf>