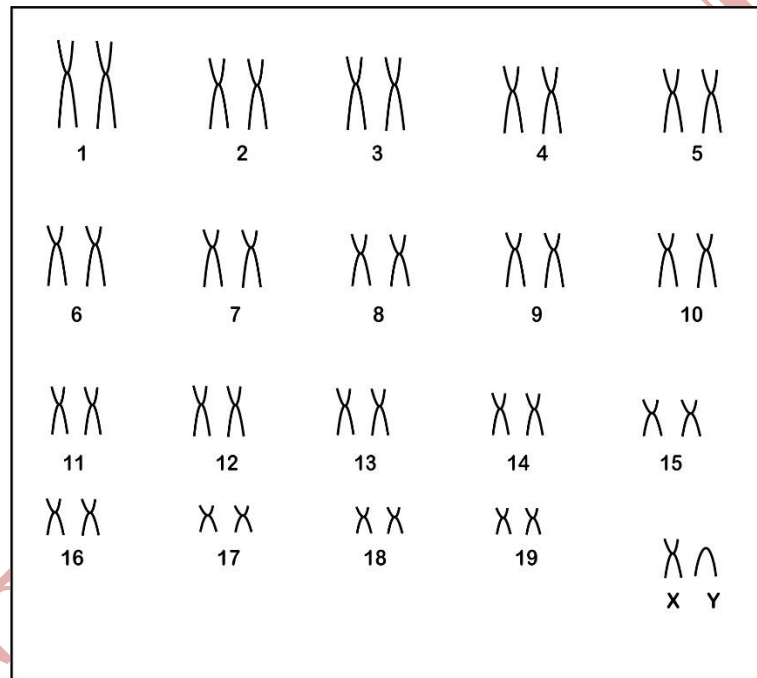


## *Urosciurus spadiceus* Olfers, 1818

Modified karyotype from Lima & Langguth (2002)

2n	FN	X Chromosome	Y Chromosome	Locality	Coordinate
40	76	Medium Submetacentric	Medium Acrocentric	Hydroelectric Samuel - RO (Brazil)	08°45'S 63°26'W

Conventional staining



Reference

Lima, J. S. F. & Langguth, A. 2002. **Karyotypes of Brazilian squirrels: *Sciurus spadiceus* and *Sciurus alphonsei* (Rodentia, Sciuridae).** Folia Zoologica – 51(3): 201–204.

Link

[https://www.researchgate.net/publication/268358771\\_Karyotypes\\_of\\_Brazilian\\_squirrels\\_Sciurus\\_spadiceus\\_and\\_Sciurus\\_alphonsei\\_Rodentia\\_Sciuridae](https://www.researchgate.net/publication/268358771_Karyotypes_of_Brazilian_squirrels_Sciurus_spadiceus_and_Sciurus_alphonsei_Rodentia_Sciuridae)