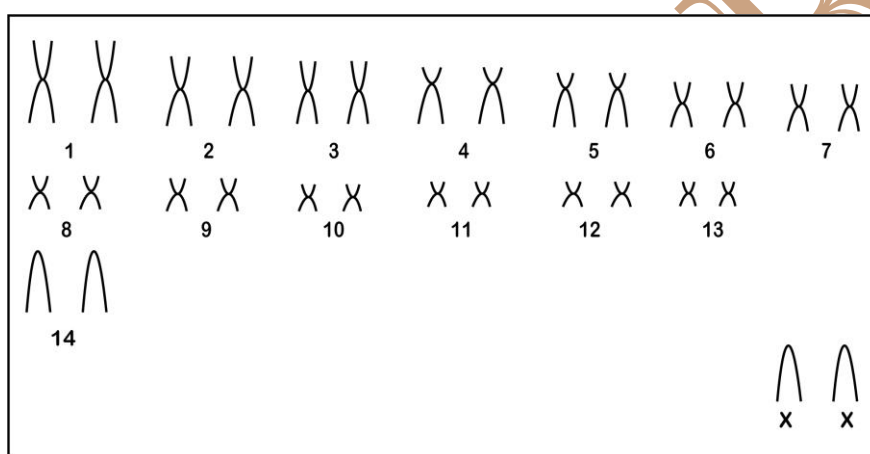


Thrichomys cf. laurentius (Lund, 1839)

Cariótipo modificado de Bezerra *et al.* (2014)

| 2n | NF | Cromossomo X | Cromossomo Y | Localidade |
|----|----|--------------|--------------|--|
| 30 | 54 | Acrocêntrico | - | Canindé de São Francisco - SE (Brasil) |

Coloração Comum



Referência

Bezerra, A. M. R.; Lazar, A.; Bonvicino, C. R. & Cunha, A. S. 2014. **Subsidies for a poorly known endemic semiarid biome of Brazil: non-volant mammals of an eastern region of Caatinga.** *Zoological Studies* 54(16): 13 p.

Link

<http://www.zoologicalstudies.com/content/53/1/16>