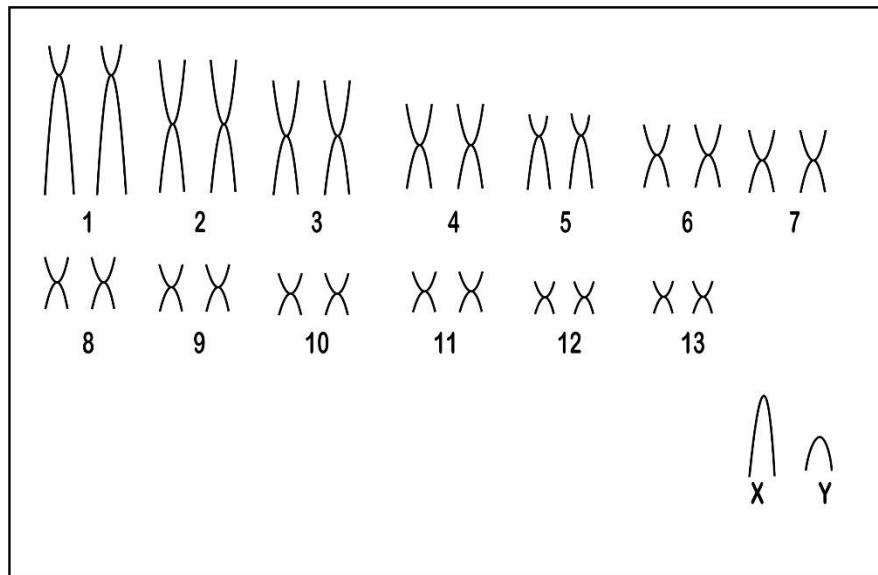


*Thrichomys apereoides* (Lund, 1839)Modified karyotype from Bonvicino *et al.* (2012)

2n	FN	X Chromosome	Y Chromosome	Locality	Coordinate
28	52	Medium Acrocentric	Small Acrocentric	<p>Farm São Francisco da Trijunção, Cocos –BA, including CC (Field cerrado)</p> <p>and</p> <p>Including CU(damp field);</p> <p>Region of the Farm Trijunção, Jaborandi – BA, including SD(semideciduous forest), CE(cerrado <i>Sensu stricto</i>), CC(Field cerrado),</p> <p>CM(field of murundum), P(plantation of Pinus)</p> <p>and</p> <p>HU(human edifice).</p> <p>Farm Paredão Vermelho, Sítio da Abadia – GO including GF(Gallery forest),</p> <p>E Farm Leite Verde, Jaborandi, including CO (carrasco)</p>	<p>14°49'S, 45°58'W; e</p> <p>14°49'S, 45°58'W;</p> <p>14°47'S, 45°51'W;</p> <p>14°46'S, 45°56'W;</p> <p>14°46'S, 45°56'W e 14°47'S, 45°57'W;</p> <p>14°48'S, 45°58'W;</p> <p>14°46'S, 45°58'W</p> <p>and</p> <p>14°46'S, 45°56'W</p> <p>14°47'S, 46°02'W</p> <p>14°36'S, 45°46'W</p>

## Conventional staining



## Reference

Bonvicino, C. R., Lindbergh, S. M.; Faria, M. B.; Bezerra, A. M. R. 2012. **The Eastern Boundary of the Brazilian Cerrado: A Hotspot Region.** *Zoological Studies* 51(7): 1207-1218.

## Link

<http://zoolstud.sinica.edu.tw/Journals/51.7/1207.pdf>