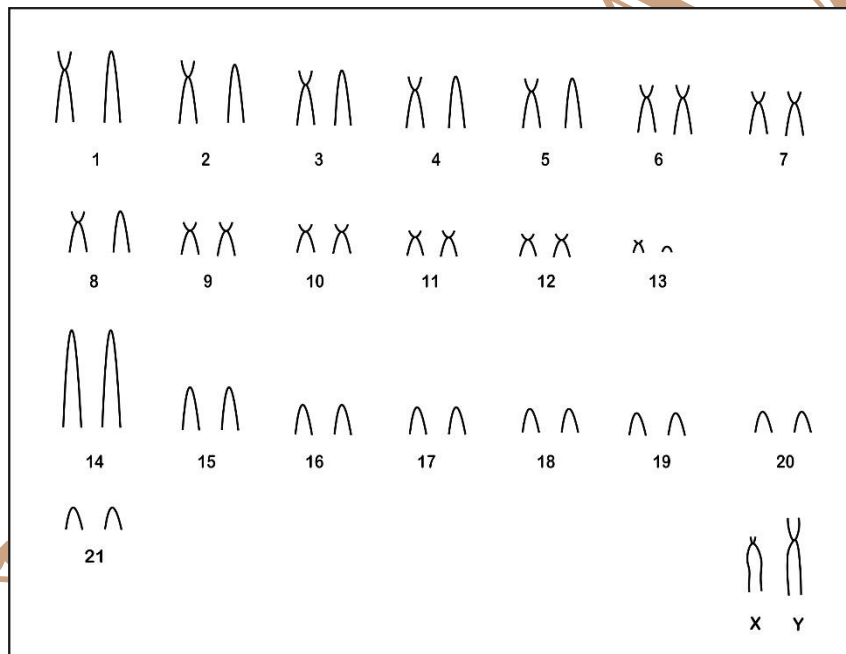


Rhipidomys sp. Tschudi, 1845

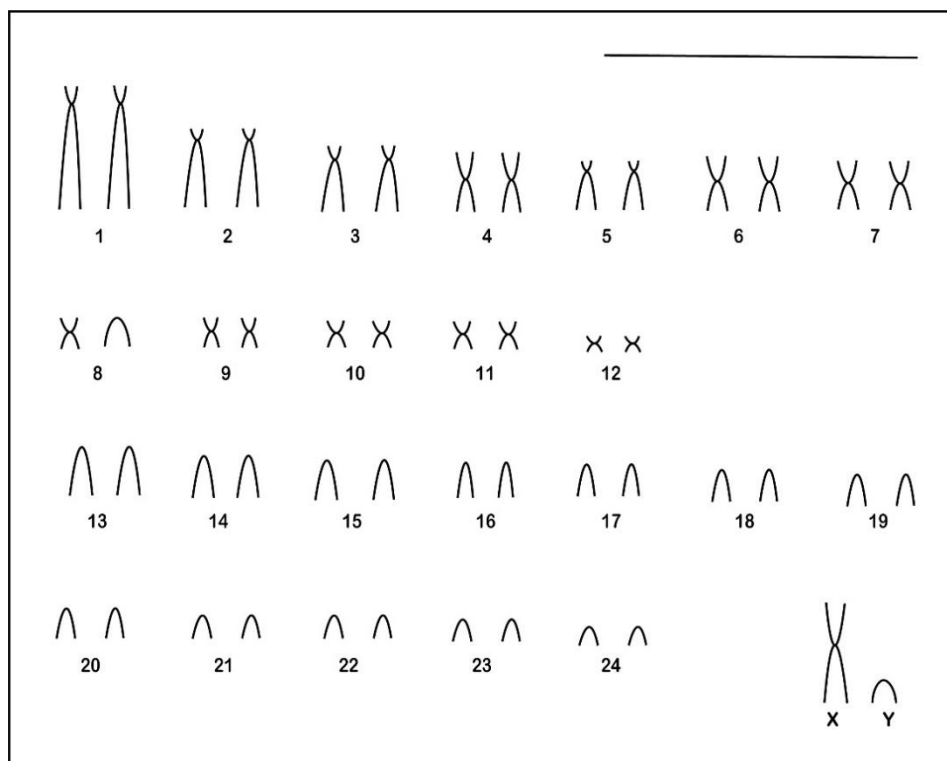
Modified karyotype from Silva *et al.* (1999)

2n	FN	X Chromosome	Y Chromosome	Locality	Coordinate
44	61	Acrocentric or Small Submetacentric	-	Morro do Chapéu - BA;	11°36'S, 41°08' W
50	72	Large Submetacentric	Medium or Small acrocentric	Manaus - AM (Brazil)	2°25' S, 59°50' W

Conventional staining (2n=44; FN=61)



Conventional staining (2n=50; NF=72)



*C-banding disponíveis em Silva *et al.* (1999)

Reference

SILVA, M. J. J.; YONENAGA-YASSUDA, Y. 1999. **Autosomal and sex chromosomal polymorphisms with multiple rearrangements and a new karyotype in the genus *Rhipidomys* (Sigmodontinae, Rodentia)**. *Hereditas* 131: 211-220.

Link

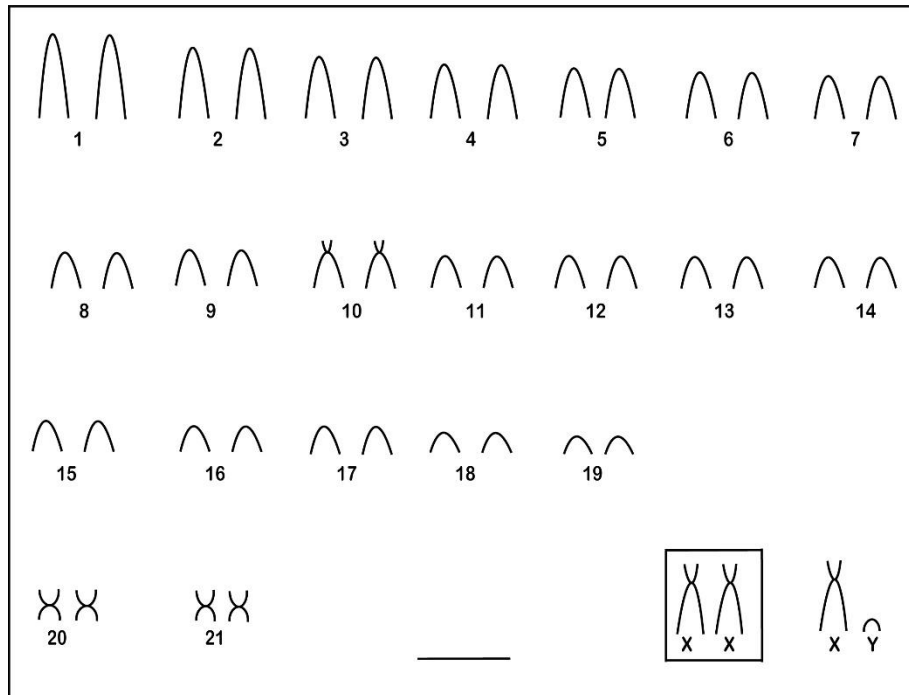
<http://onlinelibrary.wiley.com/doi/10.1111/j.1601-5223.1999.00211.x/pdf>

Cariótipo modificado de Carvalho *et al.* (2012)

2n	NF	Cromossomo X	Cromossomo Y	Localidade	Coordenada
----	----	--------------	--------------	------------	------------

44	48	Submetacêntrico médio	Acrocêntrico pequeno	Berilo- MG (Brasil)	16°57'06"S, 42°27'56"W
----	----	-----------------------	----------------------	---------------------	---------------------------

Coloração Comum (2n=44; NA=48)



*Banda G e AG-Nors disponíveis em Carvalho *et al.* (2012)

Referência

Carvalho, A. H.; Lopes, M. O. G.; Svartman, M. 2012. **A new karyotype for *Rhipidomys* (Rodentia, Cricetidae) from Southeastern Brazil.** *Comp Cytogenet.* 2012; 6(3): 227-237. PMID: PMC3833803.

Link

<http://www.ncbi.nlm.nih.gov/pmc/articles/PMC3833803/pdf/CompCytogen-006-227.pdf>