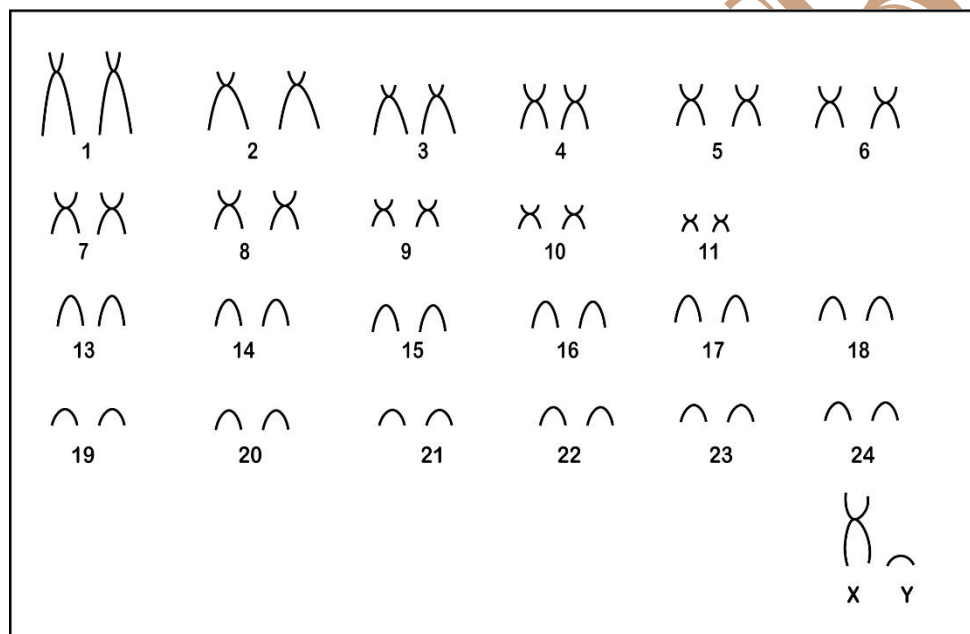


Rhipidomys nitela Thomas, 1901

Modified karyotype from Andrades-Miranda *et al.* (2002)

2n	FN	X Chromosome	Y Chromosome	Locality	Coordinate
48	68	Large Submetacentric	Small Acrocentric	Surumú – RR (Brazil)	60°47'W, 04°11'N

Conventional staining



Reference

Andrades-Miranda, J.; Oliveira, L. F. B.; Lima-Rosa, C. A. V.; Sana, D. A.; Nunes, A. P.; Mattevi, M. S. 2002. **Genetic studies in representatives of genus *Rhipidomys* (Rodentia, Sigmodontinae) from Brazil.** Acta Theriologica 47 (2): 125–135.

Link

http://download.springer.com/static/pdf/251/art%253A10.1007%252FBF03192453.pdf?auth66=1412531903_407a2284279821b6a5f7ebe82cdd33b1&ext=.pdf