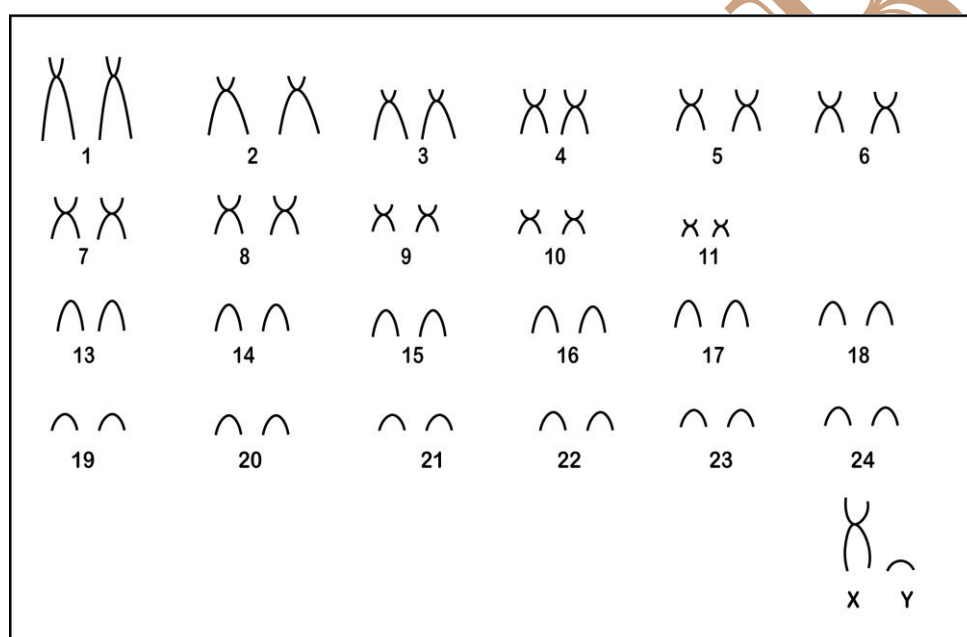


# *Rhipidomys nitela* Thomas, 1901

Cariótipo modificado de Andrades-Miranda *et al.* (2002)

2n	NF	Cromossomo X	Cromossomo Y	Localidade	Coordenada
48	68	Submetacêntrico grande	Acrocêntrico pequeno	Surumú – RR (Brasil)	60°47'W, 04°11'N

Coloração comum



Referência

Andrades-Miranda, J.; Oliveira, L. F. B.; Lima-Rosa, C. A. V.; Sana, D. A.; Nunes, A. P.; Mattevi, M. S. 2002. **Genetic studies in representatives of genus *Rhipidomys* (Rodentia, Sigmodontinae) from Brazil.** Acta Theriologica 47 (2): 125–135.

Link

[http://download.springer.com/static/pdf/251/art%253A10.1007%252FBF03192453.pdf?auth66=1412531903\\_407a2284279821b6a5f7ebe82cdd33b1&ext=.pdf](http://download.springer.com/static/pdf/251/art%253A10.1007%252FBF03192453.pdf?auth66=1412531903_407a2284279821b6a5f7ebe82cdd33b1&ext=.pdf)