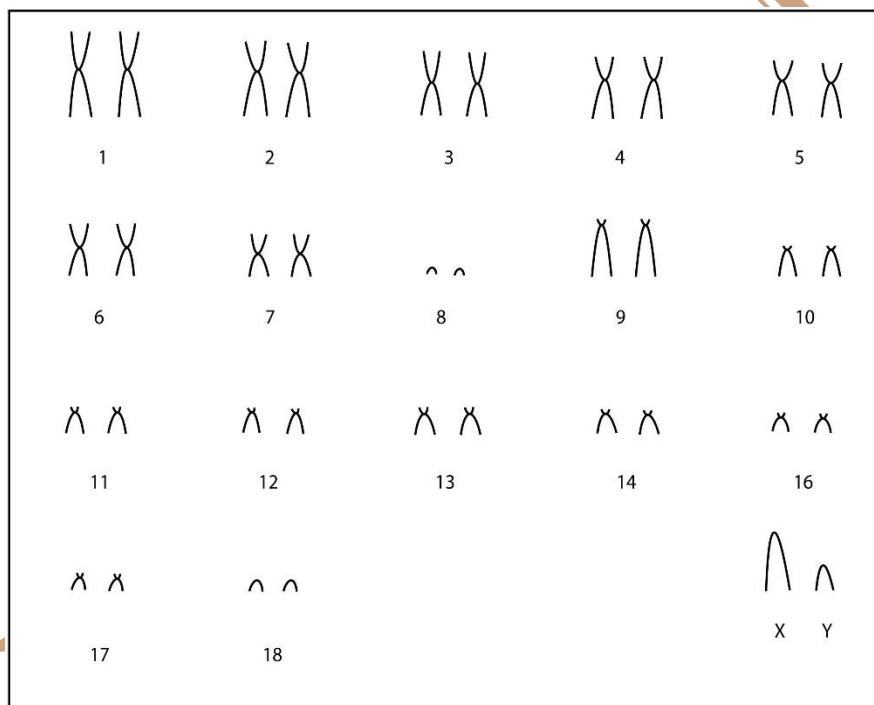


## *Rhagomys rufescens* (Thomas, 1886)

Modified karyotype from Testoni *et al.* (2010)

2n	FN	X Chromosome	Y Chromosome	Locality	Coordinate
36	50	Large Acrocentric	Medium acrocentric	Indaial - SC (Brazil)	27°02'59" S, 49°08'57" W

Conventional staining



\*G-banding available in Testoni *et al.* (2010)

### Reference

Testoni, A. F.; Althoff, S. I.; Nascimento, A. P.; Steiner-Souza, F.; Sbalqueiro, I. J. 2010. **Description of the karyotype of *Rhagomys rufescens* Thomas, 1886 (Rodentia, Sigmodontinae) from Southern Brazil Atlantic forest.** *Genetics and Molecular Biology*. Vol.33 - no.3, São Paulo. Print version ISSN 1415-4757.

### Link

[http://www.scielo.br/scielo.php?script=sci\\_arttext&pid=S1415-47572010000300017](http://www.scielo.br/scielo.php?script=sci_arttext&pid=S1415-47572010000300017)