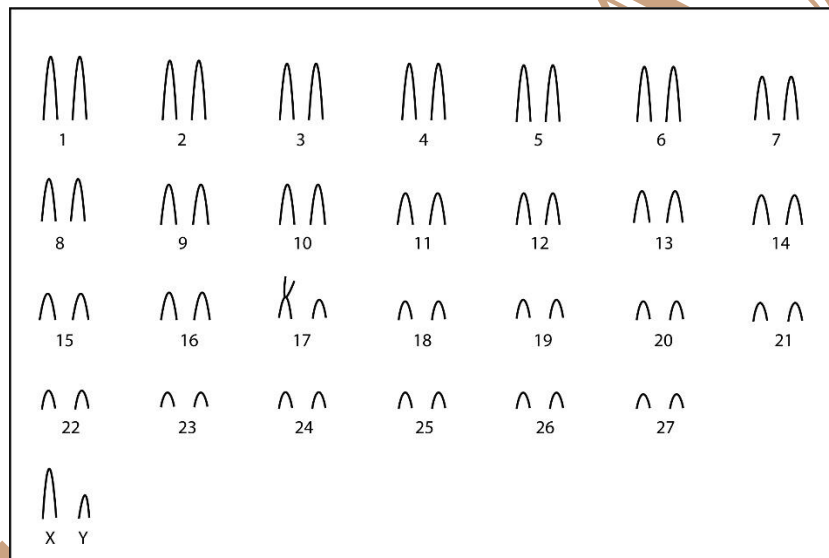


# *Pseudoryzomys simplex* (Winge, 1887)

Modified karyotype from Moreira *et al.* (2013)

2n	FN	X Chromosome	Y Chromosome	Locality	Coordinate
56	54	Large Acrocentric	Medium Acrocentric	National Park of Araguaia - TO;  Guará - SP (Brazil)	9°50'59" S, 49°56'59" W;  20°48'55"S, 47°48'59" W

Conventional staining



\*C-banding and G-banding available in Moreira *et al.* (2013)

## Reference

Moreira, C. N.; Di-Nizo, C. B.; Silva, M. J. J.; Yonenaga-Yassuda, Y.; Ventura, K. 2013. A remarkable autosomal heteromorphism in *Pseudoryzomys simplex* 2n = 56; FN = 54-55 (Rodentia, Sigmodontinae). Genetics and Molecular Biology, 36, 2, 201-206.

## Link

<http://www.scielo.br/pdf/gmb/v36n2/a10v36n2.pdf>