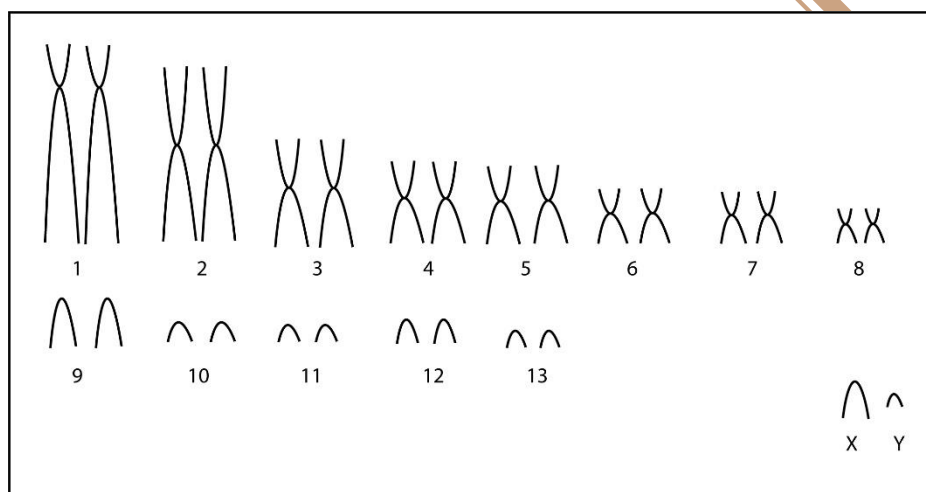


## *Proechimys quadruplicatus* Hershkovitz, 1948

Modified karyotype from Bonvicino *et al.* (2005)

2n	FN	X Chromosome	Y Chromosome	Locality	Coordinate
28	42	Acrocêntrico médio	Acrocêntrico pequeno	Left margin of Paduari River, Santa Isabel – AM (Brasil)	00°18'50"N, 64°01'40"W

Conventional staining



\*G-banding available in Bonvicino *et al.* (2005)

### Reference

Bonvicino, C. R.; Otazú, I. B.; Vilela, J. F. 2005. **Karyologic and Molecular Analysis of *Proechimys Allen, 1899 (Rodentia, Echimyidae)* from the Amazonian Region.** Arquivos do Museu Nacional, Rio de Janeiro, v.63, n.1, p.191-200. ISSN 0365-4508.

### Link

<http://www.publicacao.museunacional.ufri.br/Arquivos/Arq632005/Arq631/17Arq631.pdf>