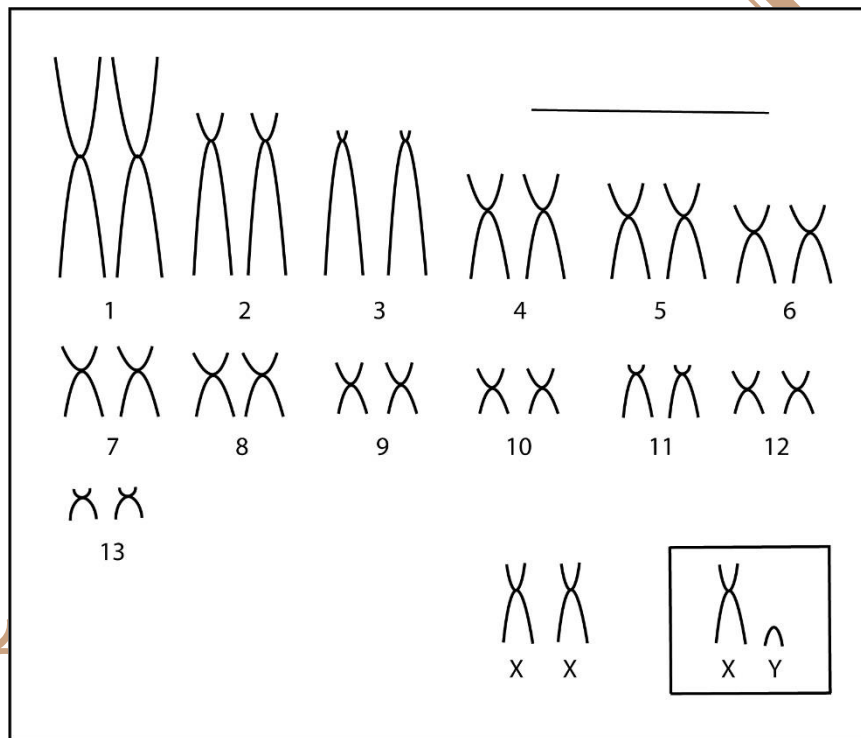


Proechimys longicaudatus (Rengger, 1830)

Modified karyotype from Machado *et al.* (2005)

2n	FN	X Chromosome	Y Chromosome	Locality	Coordinate
28	48	Medium Submetacentric	Small acrocentric	Aripuanã – MT; Juruena– MT (Brazil)	10°10' S, 59°27' W 10°19' S, 58°29' W

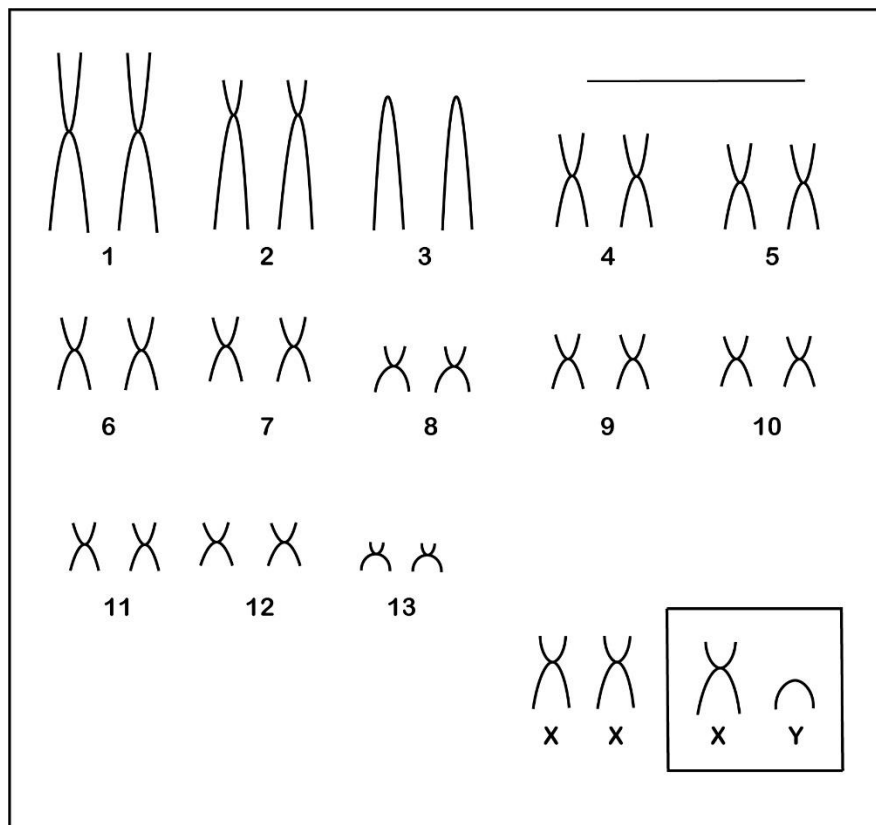
Conventional staining (Scale: 10 µm)



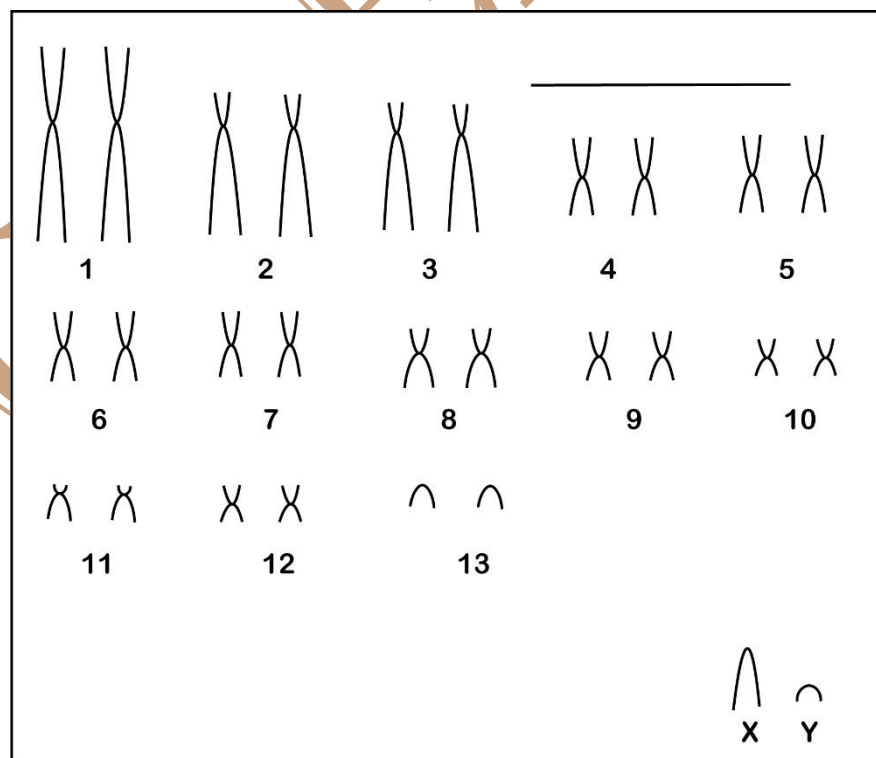
*C-banding and G-banding available in Machado *et al.* (2005)

2n	FN	X Chromosome	Y Chromosome	Locality	Coordinate
28	50	Medium Submetacentric	Small acrocentric	Apiacás – MT National Park of Emas – GO (Brazil)	09°34' S, 57°23' W 18°15' S, 52°53' W

Conventional staining (Apiacás) (Scale: 10 μm)



Conventional staining (National Park of Emas) (Scale: 10 μm)



Reference

Machado, T.; Silva, M. J. J.; Leal-Mesquita, E. R.; Carmignotto, A. P.; Yonenaga-Yassuda, Y. 2005. **Nine karyomorphs for spiny rats of the genus *Proechimys* (Echimyidae, Rodentia) from North and Central Brazil.** *Genetics and Molecular Biology*, 28, 4, 682-692.

Link

<http://www.scielo.br/pdf/gmb/v28n4/a07v28n4.pdf>

CIPEMAB