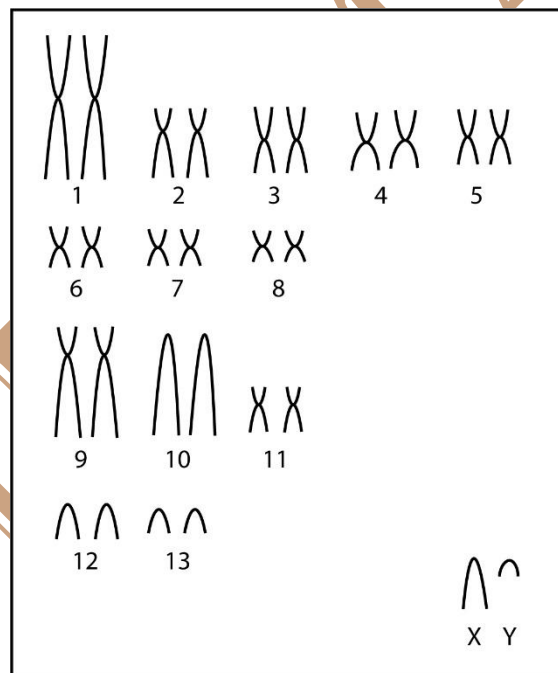


Proechimys cuvieri Petter, 1978

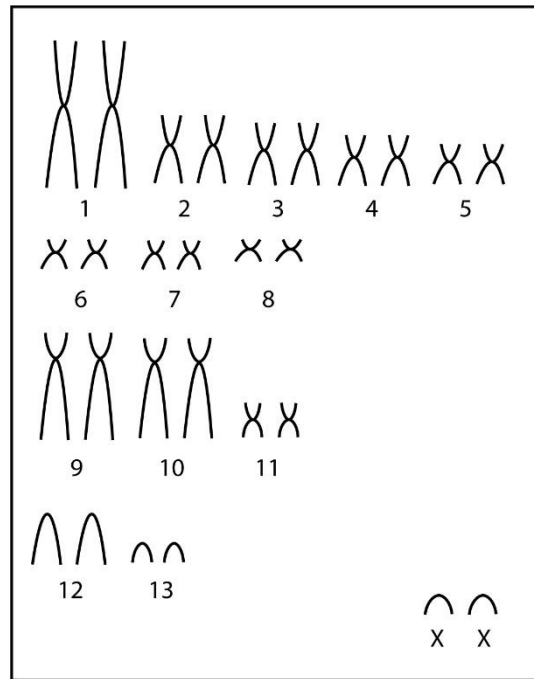
Modified karyotype from Patton et al. (2000)

2n	FN	X Chromosome	Y Chromosome	Locality
28	46, 48 e 50	Small acrocentric	Diminutive acrocentric	Macaco - AM; Altamira, Xingu River- PA; Juruá River- AC (Brazil)

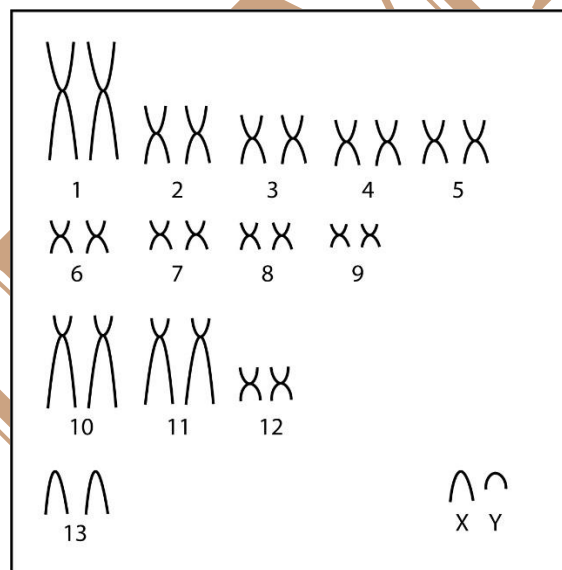
Conventional staining (Male 2n=28; FN=46)



Conventional staining (Fêmele 2n=28; FN=48)



Conventional staining (Male $2n=28$; FN=50)



Reference

Patton, J. L.; Silva, M. N. F.; Malcolm, J. R. 2000. **Mammals of the Rio Juruá and the evolutionary and ecological diversification of Amazonia**. Bulletin of the American Museum of Natural History ; no. 244. 306 pages. ISSN 0003-0090.

Link

<http://digitallibrary.amnh.org/dspace/handle/2246/1593>