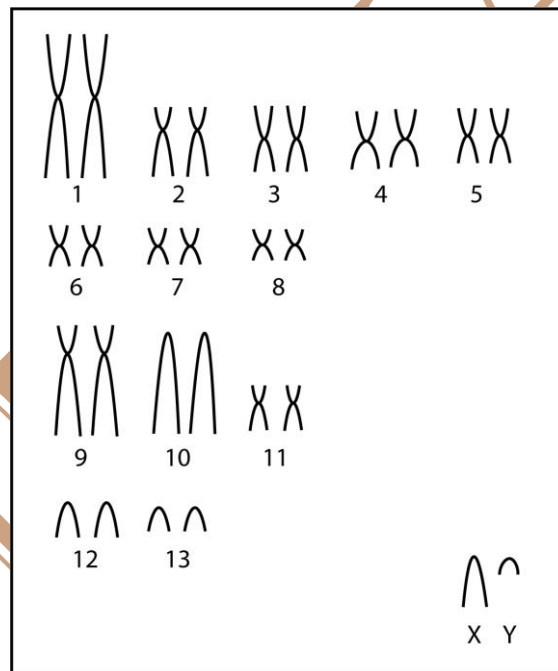


Proechimys cuvieri Petter, 1978

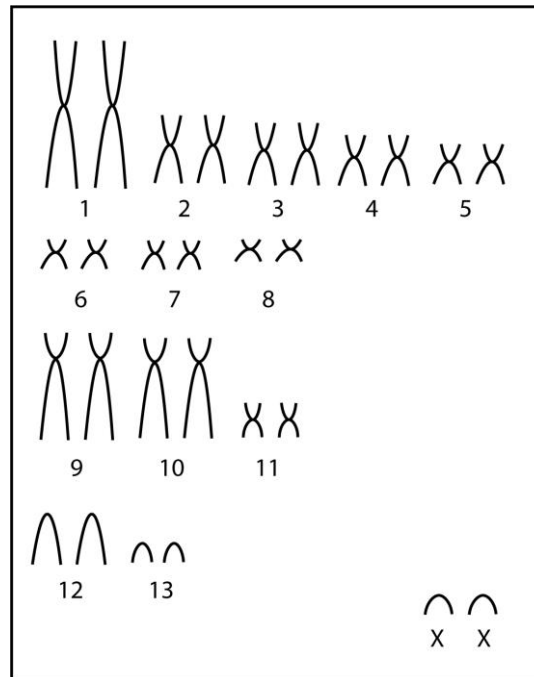
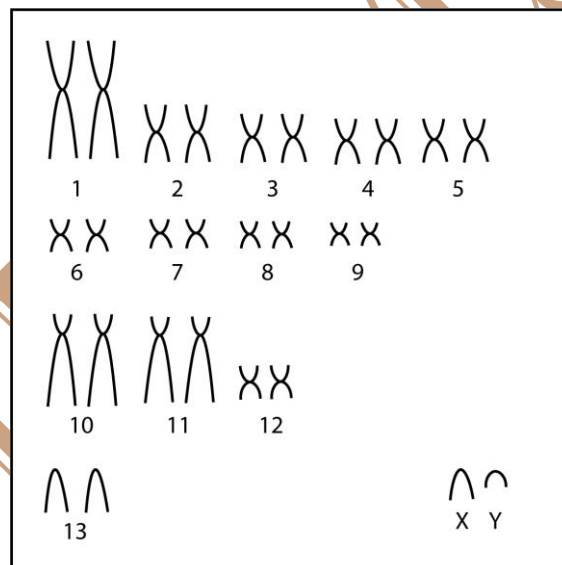
Cariótipo modificado de Patton et al. (2000)

2n	NF	Cromossomo X	Cromossomo Y	Localidade
28	46, 48 e 50	Acrocêntrico pequeno	Acrocêntrico diminuto	Macaco – AM; Altamira, Rio Xingu – PA; Rio Juruá – AC (Brasil)

Coloração Comum (Macho 2n=28; NF=46)



Coloração Comum (Fêmea 2n=28; NF=48)

Coloração Comum (Macho $2n=28$; $NF=50$)

Referência

Patton, J. L.; Silva, M. N. F.; Malcolm, J. R. 2000. **Mammals of the Rio Juruá and the evolutionary and ecological diversification of Amazonia**. Bulletin of the American Museum of Natural History ; no. 244. 306 pages. ISSN 0003-0090.

Link

<http://digitallibrary.amnh.org/dspace/handle/2246/1593>