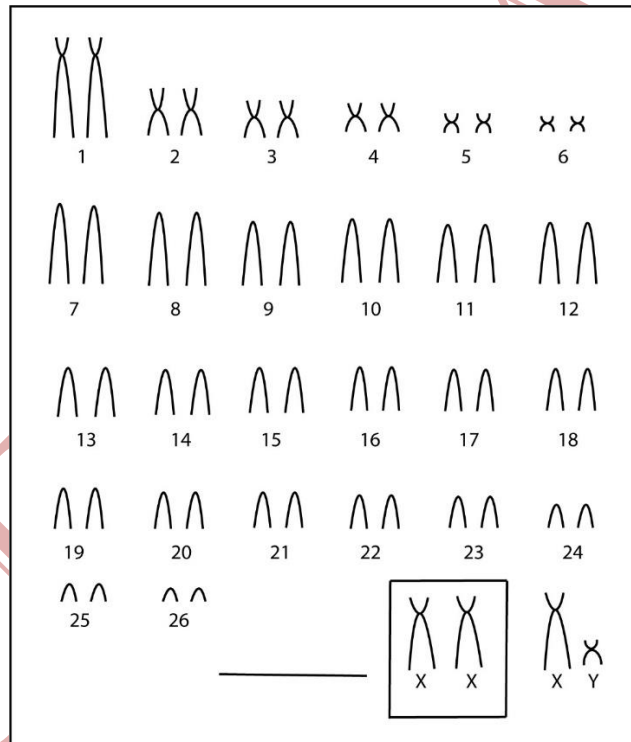


Oxymycterus sp. Waterhouse, 1837

Modified karyotype from Svartman & Almeida, 1993

2n	FN	X Chromosome	Y Chromosome	Locality	Coordinate
54	64	Large Submetacentric	Small Submetacentric	National Park from Brasília-DF Biological Reserve of Águas Emendadas-DF (Brazil)	15°43'S, 47°56'W 15°33'S, 47°35'W

Conventional staining (Scale: 10 µm)



*C-banding and G-banding available in Svartman & Almeida, 1993

Reference

Svartman, M. & Almeida, E. J. C. 1993. **The karyotype of *Oxymycterus sp.* (Cricetidae, Rodentia) from Central Brazil.** Departamento de Biologia, Universidade de São Paulo, SP. Experientia. Volume 49, Issue 8, pp 718-720.

Link

<http://link.springer.com/article/10.1007/BF01923959>