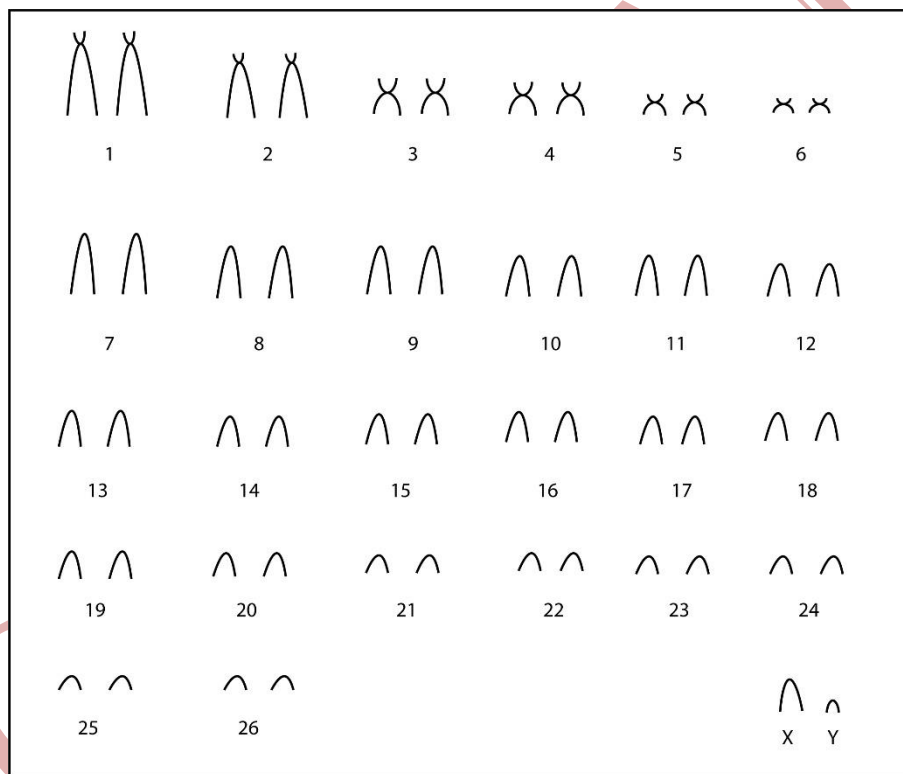


Oxymycterus nasutus (Waterhouse, 1837)

Modified karyotype from Antunes, 2011

| 2n | FN | X Chromosome | Y Chromosome | Locality | Coordinate |
|----|----|--------------------|-------------------|--|---------------------------------------|
| 54 | 64 | Medium acrocentric | Small acrocentric | Mata Palustre – RS Mata Arenosa Ciliar – RS (Brazil) | 32°07'S; 52° 09'W 32°09'S; 52°11'W |

Conventional staining



*C-banding and G-banding available in Antunes, 2011

Reference

Antunes, T. M. V. 2011. **Análise citogenética de nove espécies de mamíferos de pequeno porte (Didelphimorphia, Rodentia) da Região Sul da Planície Costeira do Rio Grande do Sul, Brasil.** Universidade do Rio Grande do Sul, RS.

Link

<http://www.youblisher.com/p/385343-Dissertacao-Thais-Morales/>