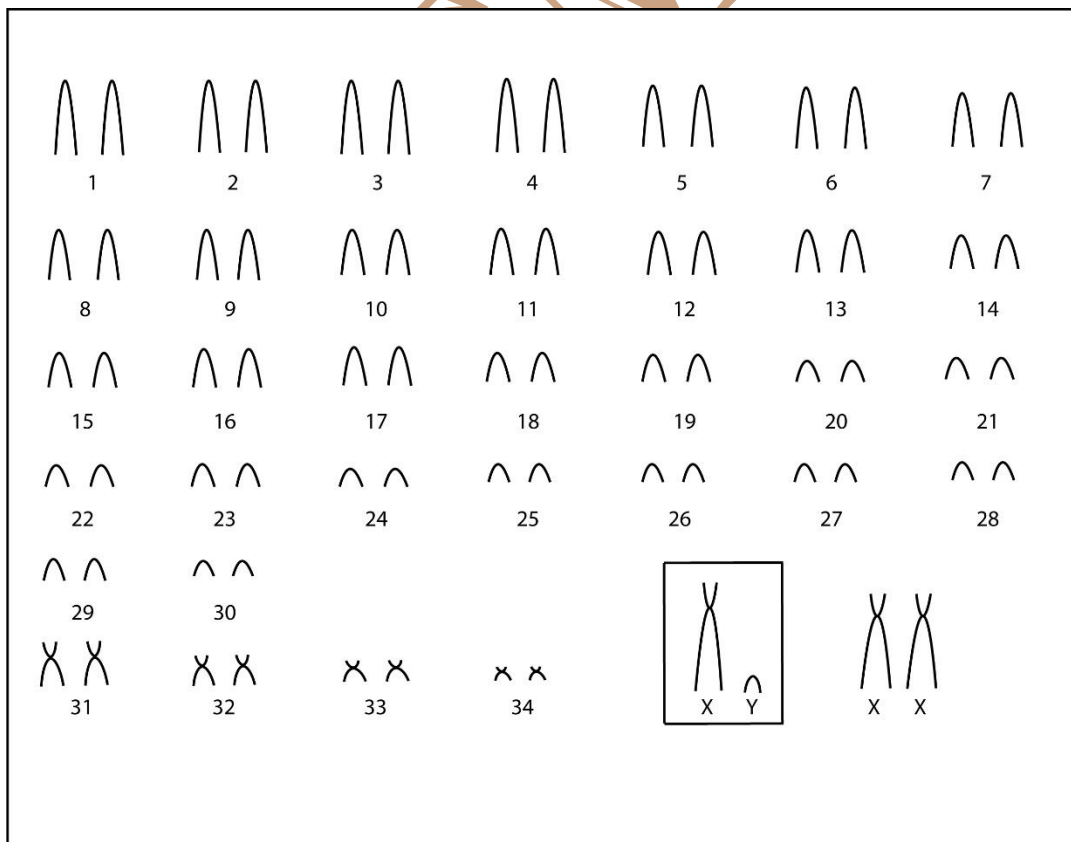


Oligoryzomys sp. Bangs, 1900

Modified karyotype from Lima *et al.*, 2003

2n	FN	X Chromosome	Y Chromosome	Locality	Coordinate
70	76	Submetacêntrico grande	Acrocêntrico pequeno	Farm Elizeu, Lajeado-TO; Chacara União, Porto Nacional - TO; Farm Fiandeiras, Cavalcante, Chapada dos Veadeiros National Park - GO; Farm Cadoz, Mimoso de Goiás-GO (Brazil)	9°55' S, 48°17' W; 10°44'S, 48°23' W; 13°47'51"S, 47°27' 30"W; 15°03'22" S, 48°09'41" W

Conventional staining



*C-banding and G-banding available in Lima *et al.*, 2003

Reference

Lima, J. F. S.; Bonvicino, C. R.; Kasahara, S. 2003. **A new karyotype of *Oligoryzomys* (Sigmodontinae, Rodentia) from central Brazil.** Hereditas 139: 1 – 6.

Link

<http://onlinelibrary.wiley.com/doi/10.1111/j.1601-5223.2003.01706.x/pdf>

CIPEMAB