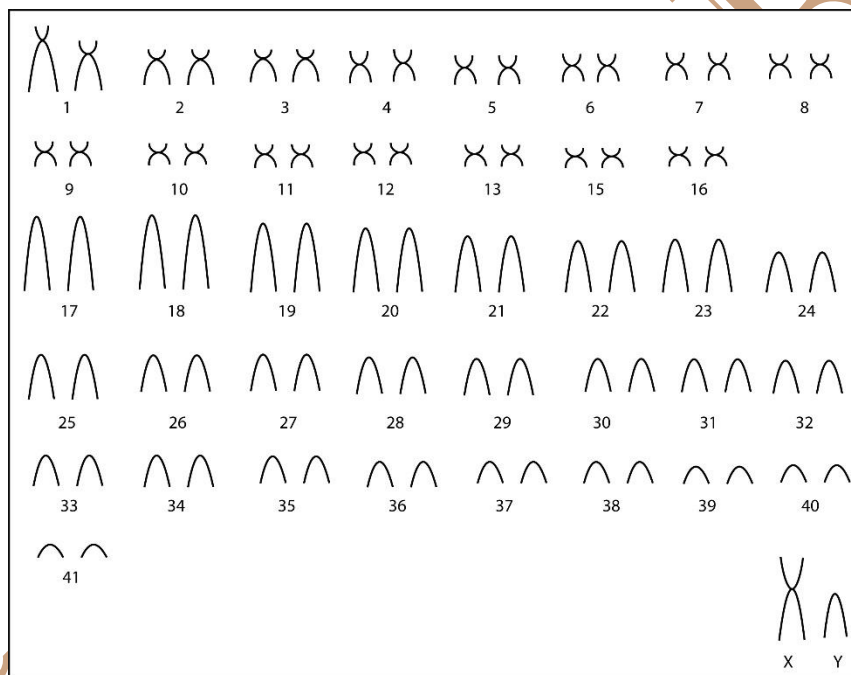


Oecomys bicolor (Tomes, 1860)

Modified karyotype from Andrades-Miranda *et al.* (2001)

2n	NF	X Chromosome	Y Chromosome	Locality	Cordinate
82	110	Large submetacentric	Medium acrocentric	UHE Samuel - RO (Brazil)	08°45'S, 63°28'W

Conventional staining



2n	NF	X Chromosome	Y Chromosome	Locality
80	124	Large submetacentric	Small acrocentric	Serra da Mesa; Ipameri - GO (Brasil)

Reference

Andrades-Miranda, J.; Oliveira, L. F. B.; Zanchin, N. I. T.; Mattevi, M. S. 2001. **Chromosomal description of the rodent genera *Oecomys* and *Nectomys* from Brazil.** Acta Theriologica, Volume 46, Issue 3, pp 269-278.

Link

<http://link.springer.com/article/10.1007/BF03192433>