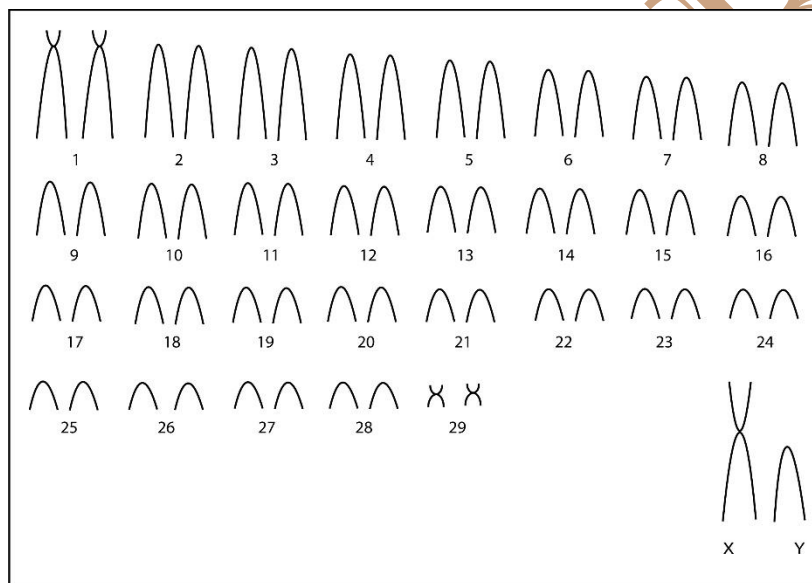


## *Oecomys bahiensis* Hershkovitz, 1960

Modified karyotype from Langguth *et al.* (2005)

2n	NF	X Chromosome	Y Chromosome	Locality
60	62	Large acrocentric	Large acrocentric	São Loreço da Mata – PE; Saltinho, Formoso River – PE (Brazil)

Conventional staining



\*C-Banding and G-Banding available in Langguth *et al.*, 2005

### Reference

Langguth, A.; Maia, V.; Mattevi, M. S. 2005. **Karyology of Large Size Brazilian Species of the Genus *Oecomys* Thomas, 1906 (Rodentia, Muridae, Sigmodontinae)**. Arquivos do Museu Nacional, Rio de Janeiro, v.63, n.1, p.183-190. ISSN 0365-4508.

### Link

<http://www.publicacao.museunacional.ufrj.br/Arquivos/Arq632005/Arq631/16Arq631.pdf>