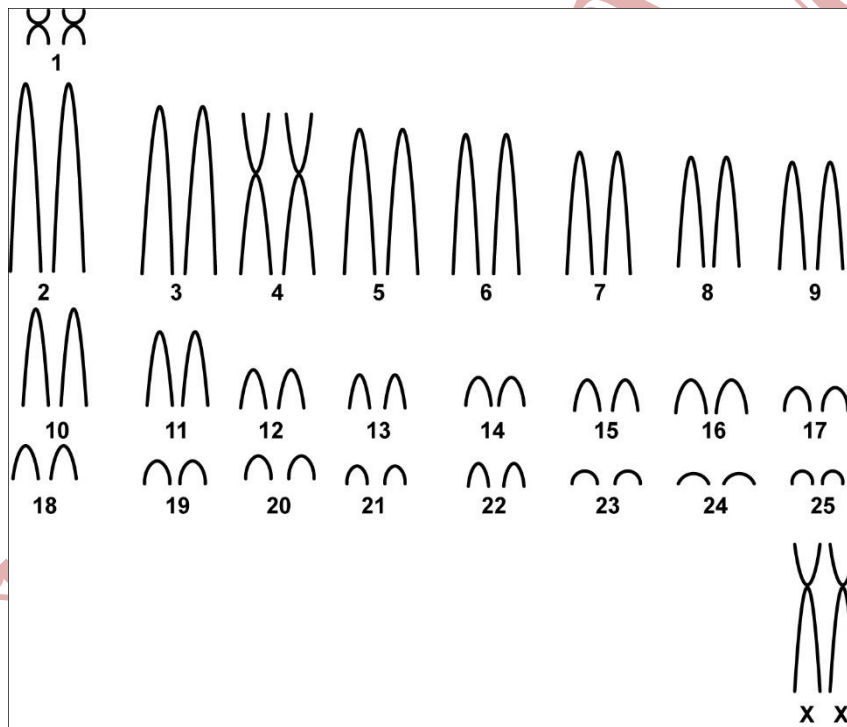


## *Nectomys rattus* (Pelzeln, 1883)

Modified karyotype from Bonvicino *et al.* (2005)

2n	NF	X Chromosome	Y Chromosome	Locality	Cordinate
52	56	Large submetacentric	-	Chapada dos Veadeiros National Park - GO (Brazil)	14°04'S - 47°45'W 14°01'S - 47°31'W 14°07'S - 47°41'W

Conventional staining



Reference

Bonvicino, C. R.; Lemos, B.; Weksler, M. 2005. **Small Mammals of Chapada dos Veadeiros National Park (Cerrado of Central Brazil): Ecologic, Karyologic, and Taxonomic Considerations.** Brazilian Journal of Biology, 65 (3):395-406.

Link

<http://www.scielo.br/pdf/bjb/v65n3/26566.pdf>