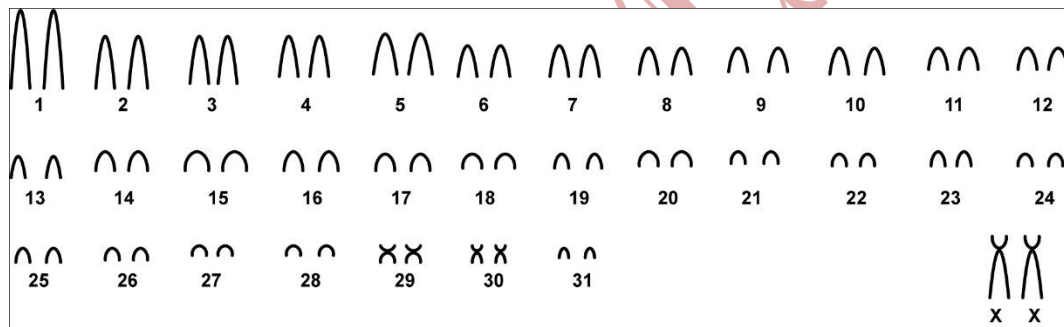


## *Neacomys spinosus* (Thomas, 1882)

Modified karyotype from Patton *et al.* (2000)

2n	NF	X Chromosome	Y Chromosome	Locality
64	68	Large or Medium subtelocentric	Small acrocentric	Ysuní National Park , Napo; Tinguino, Pataza (Equador) Huampami, Cenepa River -Amazonas (Peru) Igarapé, Porongaba - AC (Brazil) Condor; Penedo - AM (Brazil)

Conventional staining



Reference

Patton, J. L.; Silva, M. N. F.; Malcolm, J. R. 2000. **Mammals of the Rio Juruá and the evolutionary and ecological diversification of Amazonia.** Bulletin of the American Museum of Natural History ; no. 244. 306 pages. ISSN 0003-0090.

Link

<http://digitallibrary.amnh.org/dspace/handle/2246/1593>