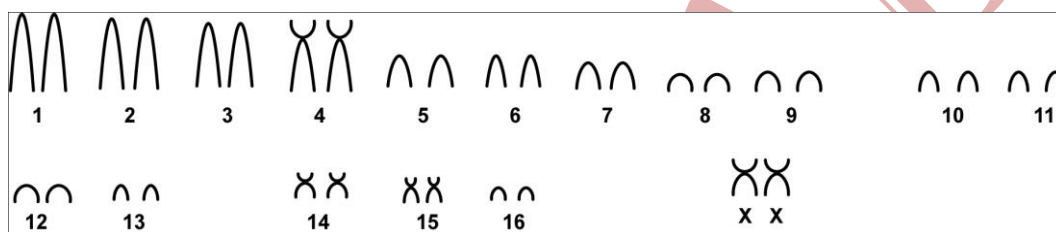


Neacomys minutus Patton *et al.* (2000)

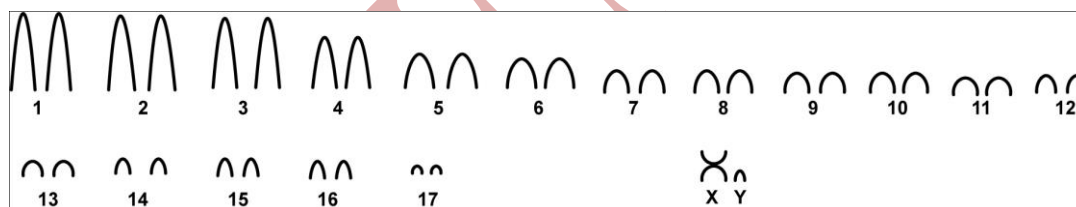
Cariótipo modificado de Patton *et al.* (2000)

2n	NF	Cromossomo X	Cromossomo Y	Localidades
35 - 36	40	Metacêntrico médio a pequeno	Acrocêntrico pequeno	Penedo, Sacado, Barão Vermelho, Altamira, Vira- Volta - AM (Brasil)

Coloração comum (2n = 35)



Coloração comum (2n = 36)



Referência

Patton, J. L.; Silva, M. N. F.; Malcolm, J. R. 2000. **Mammals of the Rio Juruá and the evolutionary and ecological diversification of Amazonia**. Bulletin of the American Museum of Natural History ; no. 244. 306 pages. ISSN 0003-0090.

Link

<http://digitallibrary.amnh.org/dspace/handle/2246/1593>