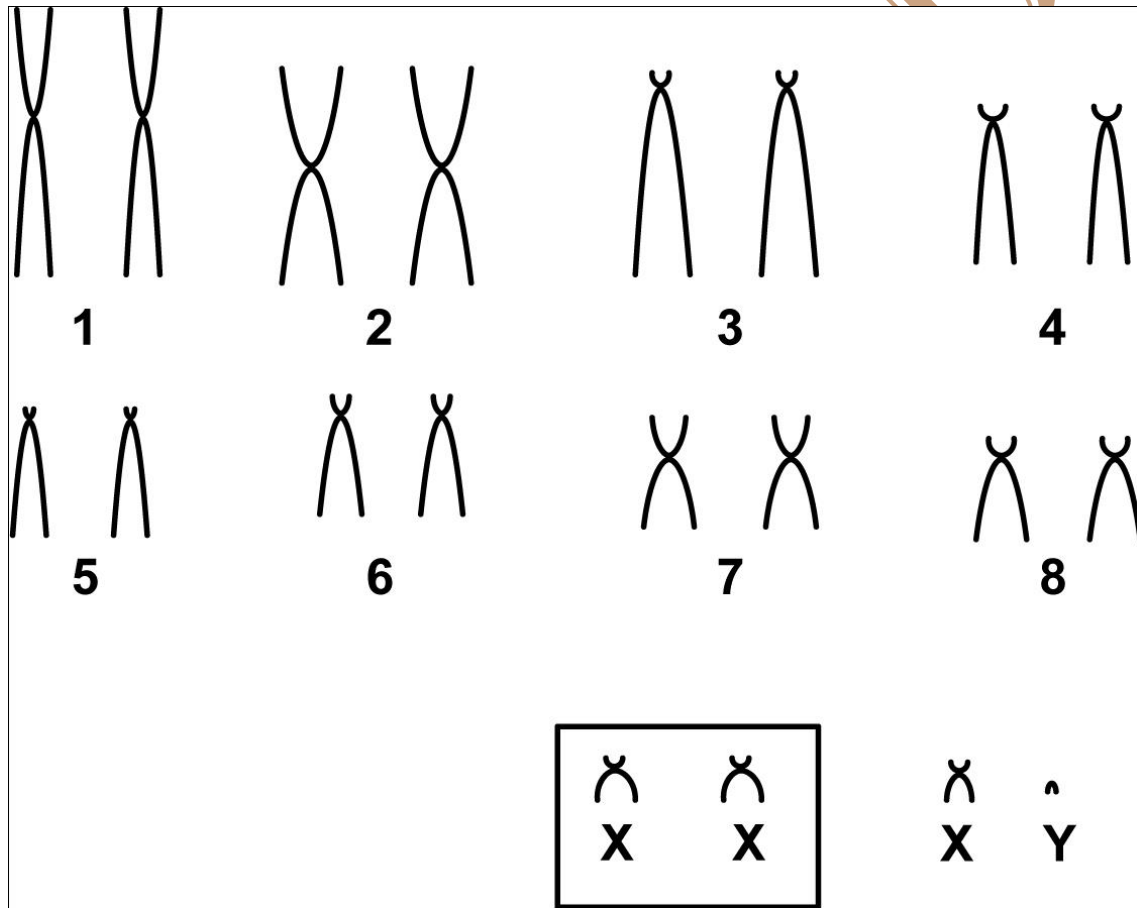


Monodelphis dimidiata (Wagner, 1847)

Modified karyotype from Carvalho *et al.* (2002)

2n	NF	X Chromosome	Y Chromosome	Locality	Coordinate
18	32	Small submetacentric	Punctuate	Terra da Areia – RS Charqueada – RS (Brazil)	29°83'49"S, 50°80'49"W -

Conventional staining



Reference

Carvalho, B. A.; Oliveira, L. F. B.; Nunes, A. P.; Mattevi, M. S. 2002. **Karyotypes of Nineteen Marsupial Species from Brazil**. *Journal of Mammalogy*, 83(1):58–70.

Link

<http://jmammal.oxfordjournals.org/content/jmammal/83/1/58.full.pdf>