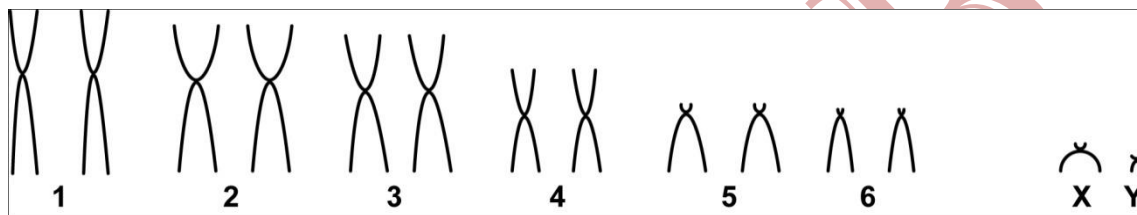


Micoureus regina (Thomas, 1898)

Modified karyotype from Patton *et al.* (2000)

2n	NF	X Chromosome	Y Chromosome	Locality	Coordinates
14	20	Small acrocentric	Small acrocentric	Igarapé Porongaba, Right side of Juruá River – AC (Brazil)	08°40'S, 72°47'W

Conventional staining



Reference

Patton, J. L.; Silva, M. N. F.; Malcolm, J. R. 2000. **Mammals of the Rio Juruá and the Evolutionary and Ecological Diversification of Amazonia**. American Museum of Natural History, Number 244:1-306.

Link

<http://digitallibrary.amnh.org/handle/2246/1593>