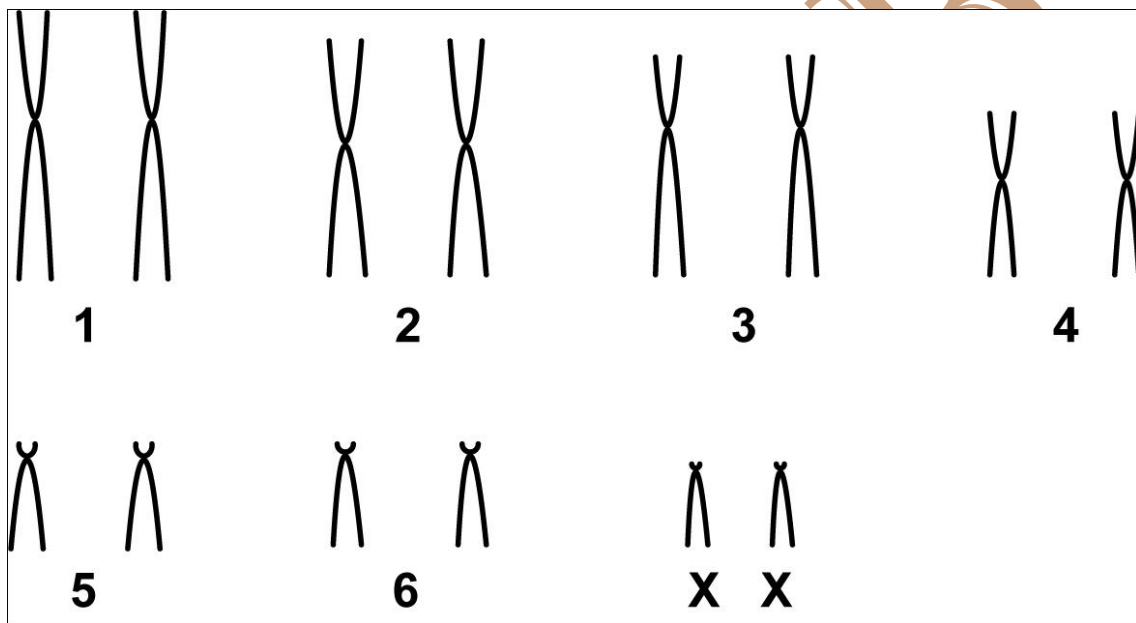


Micoureus paraguayanus (Tate, 1931)

Modified karyotype from Pereira *et al.* (2008)

2n	NF	X Chromosome	Y Chromosome	Locality
14	20	Large submetacentric	Medium metacentric	Serra do Mar State Park, Caraguatatuba - SP (Brazil)

Conventional staining



Reference

Pereira, N. P.; Ventura, K.; Júnior, M. C. S.; Silva, D. M.; Yonenaga-Yassuda, Y.; Pellegrino, K. C. M. 2008. **Karyotype Characterization and Nucleolar Organizer Regions of Marsupial Species (Didelphidae) from Areas of Cerrado and Atlantic Forest in Brazil.** *Genetics and Molecular Biology*. 31(4): 887-892.

Link

<http://www.scielo.br/pdf/gmb/v31n4/gmb-31-4-aop4.pdf>