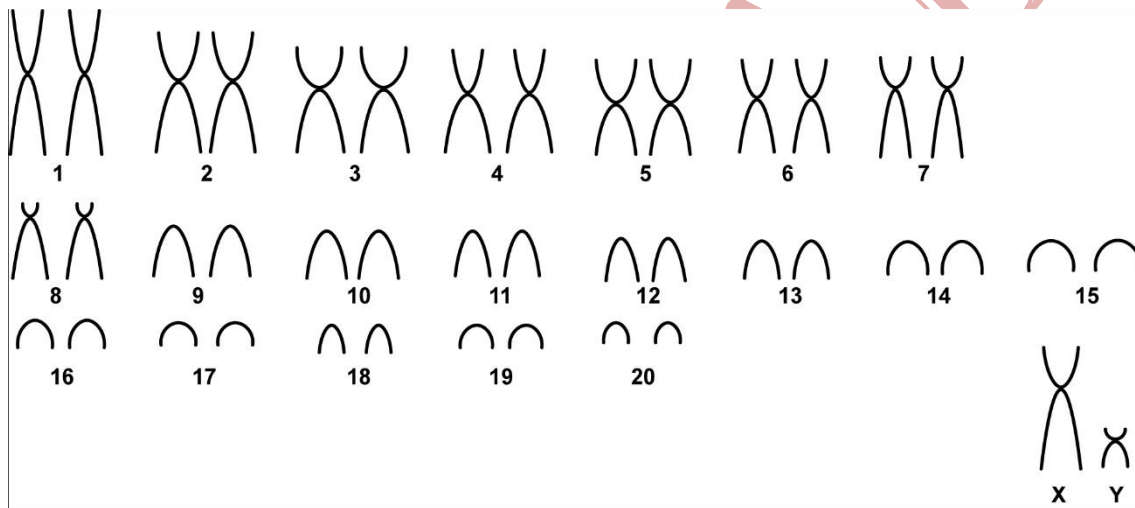


## *Mesomys occultus* Patton *et al.*(2000)

Modified karyotype from Patton *et al.* (2000)

2n	NF	X Chromosome	Y Chromosome	Locality	Cordinate
42	54	Large submetacentric	Small subtelo-centric	Colocação Vira-Volta, Left margin of Juruá River, Igarapé Arabidi, affluent of Paraná, Breu - AM (Brazil)	3°17'S, 66°14'W

Conventional staining



Reference

Patton, J. L.; Silva, M. N. F.; Malcolm, J. R. 2000. **Mammals of the Rio Juruá and the evolutionary and ecological diversification of Amazonia**. Bulletin of the American Museum of Natural History ; no. 244. 306 pages. ISSN 0003-0090.

Link

<http://digitallibrary.amnh.org/dspace/handle/2246/1593>