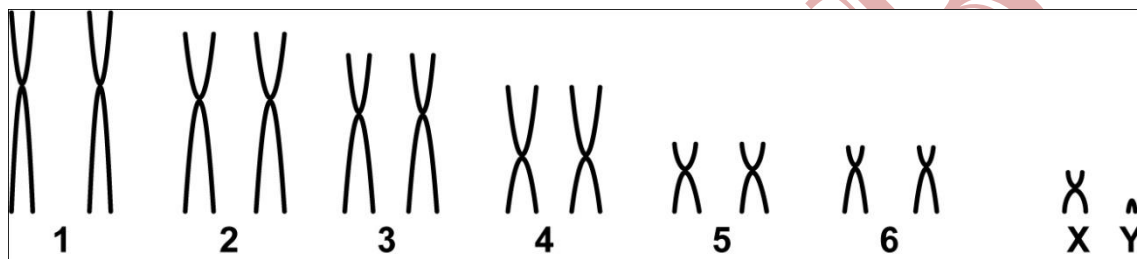


Marmosops neblina Gardner, 1990

Modified karyotype from Patton *et al.* (2000)

2n	NF	X Chromosome	Y Chromosome	Locality
14	24	Small submetacentric	Barro Vermelho, left side of the Juruá River- AM (Brazil)	06°28'S, 68°46'W

Conventional staining



Reference

Patton, J. L.; Silva, M. N. F.; Malcolm, J. R. 2000. **Mammals of the Rio Juruá and the Evolutionary and Ecological Diversification of Amazonia.** American Museum of Natural History, Number 244:1-306.

Link

<http://digitallibrary.amnh.org/handle/2246/1593>