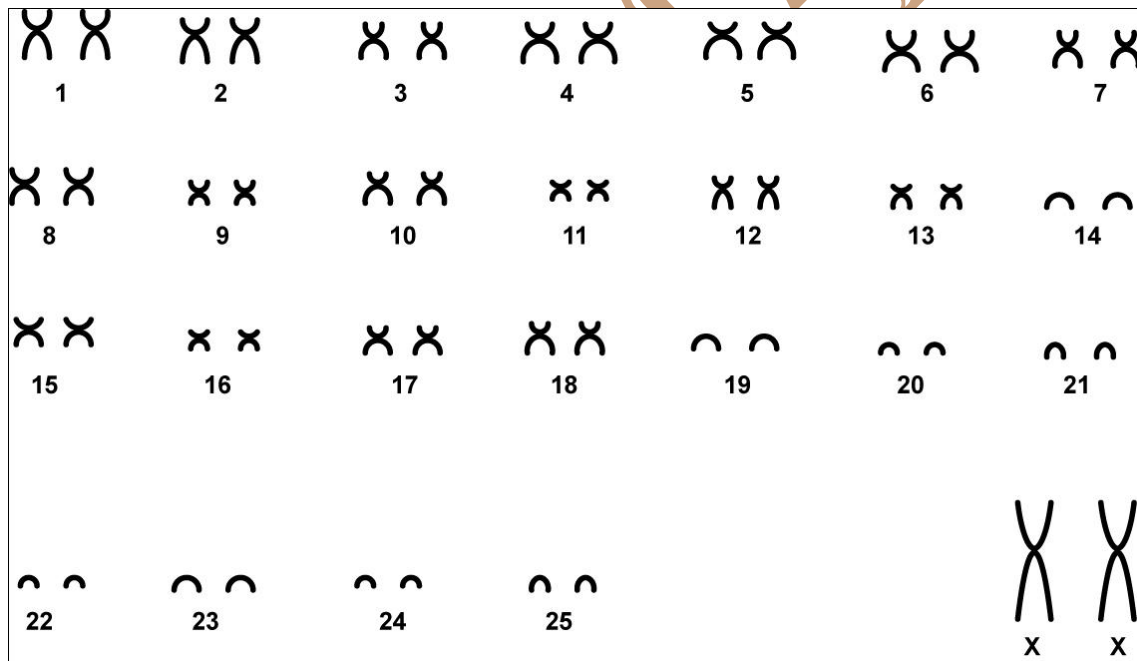


Kerodon rupestris (Wied-Neuwied, 1820)

Modified karyotype from Lessa *et al.* (2013)

2n	NF	X Chromosome	Y Chromosome	Locality	Cordinate
52	92	Large metacentric	Medium acrocentric	Itapajé - CE; Itaquara - BA and Botumirim - MG (Brazil)	03°41'S - 39°34'W; 12°15'S - 41°36'W; 16°52'S - 43°01'W

Conventional staining



Reference

Lessa, G.; Corrêa, M. M. O.; Pessôa, L. M.; Zappes, I. A. 2013. **Chromosomal Differentiation in *Kerodon rupestris* (Rodentia: Caviidae) from the Brazilian Semi-arid Region.** *Mastozoología Neotropical*, 20(2):399-405, Mendoza. Versão on-line ISSN 1666-0536.

Link

<http://www.scielo.org.ar/pdf/mznt/v20n2/v20n2a13.pdf>

CIPEMAB