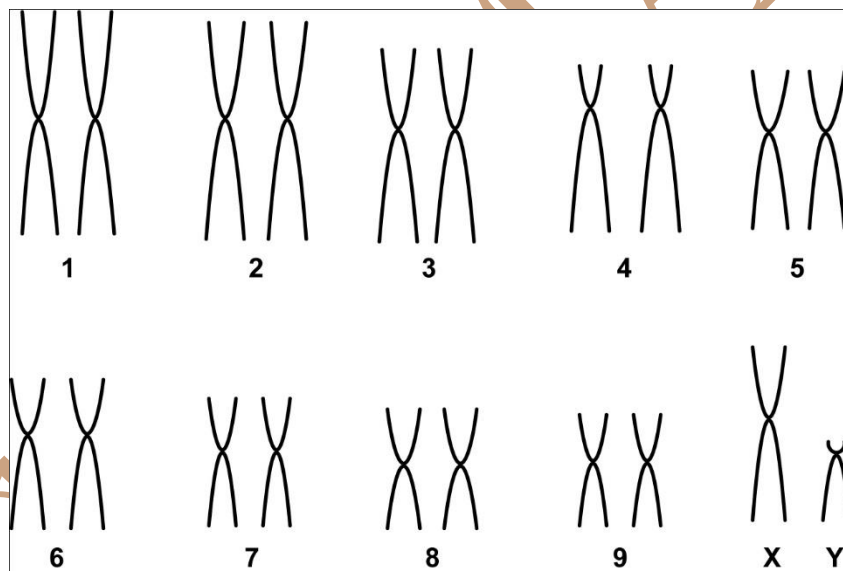


Juliomys ossitenuis Costa *et al.* (2007)

Modified karyotype from Paresque *et al.* (2009)

2n	NF	X Chromosome	Y Chromosome	Locality	Cordinate
20	36	Metacentric or Large submetacentric	Medium Acrocentric	Caparaó National Park, Dorés do Rio Preto - ES (Brazil) MBML (Biologia Mello Leitão Museum) 2783 - ES (Brazil)	20°46'S; 41°81' W, 20°48'S 41°83' W

Conventional staining



*G-Banding available in Paresque *et al.* (2009)

Reference

Paresque, R.; Christoff, A. U; Fagundes, V. 2009. **Karyology of the Atlantic forest rodent *Juliomys* (Cricetidae): A new karyotype from southern Brazil.** Genetics and Molecular Biology, Vol. 32, No 2, ISSN 1415 – 4757.

Link

<http://www.scielo.br/pdf/gmb/2009nahead/2008-078.pdf>