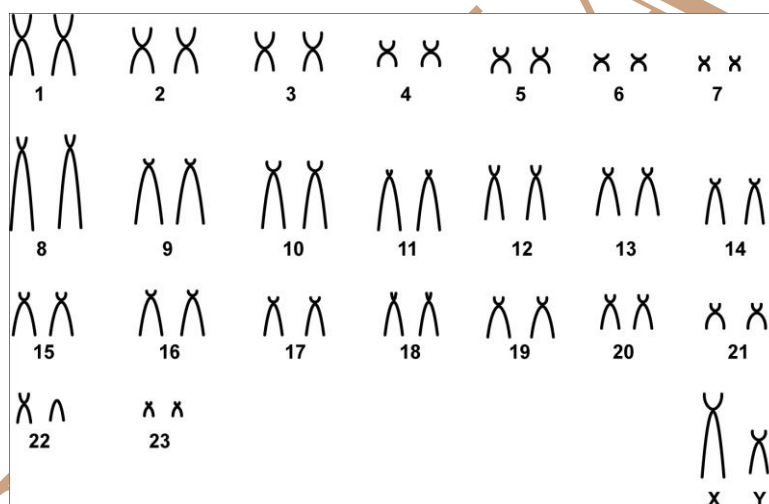


## *Hylaeamys laticeps* (Lund, 1840)

Cariótipo modificado de Weksler *et al.* (1999)

2n	NF	Cromossomo X	Cromossomo Y	Localidades	Coordenadas
48	60	Subtelocêntrico grande	Metacêntrico médio	Casimiro de Abreu -RJ; Ilhéus - BA; Linhares - ES (Brasil)	22°25'S, 42°02'W; 14°38'S, 39°12'W; 18°35'S, 39°45'W

Coloração comum



\*Banda G disponível em Weksler *et al.* (1999)

### Referência

Weksler, M.; L. Geise & Cerqueira, R. **A new species of *Oryzomys* (Rodentia, Sigmodontinae) from southeast Brazil, with comments on the classification of the *O. capito* species group.** Zoological Journal of the Linnean Society 125: 445-462.

### Link

[https://www.researchgate.net/publication/220025555\\_A\\_new\\_species\\_of\\_Oryzomys\\_Rodentia\\_Sigmodontinae\\_from\\_southeast\\_Brazil\\_with\\_comments\\_on\\_the\\_classification\\_of\\_the\\_O\\_capito\\_species\\_group](https://www.researchgate.net/publication/220025555_A_new_species_of_Oryzomys_Rodentia_Sigmodontinae_from_southeast_Brazil_with_comments_on_the_classification_of_the_O_capito_species_group)