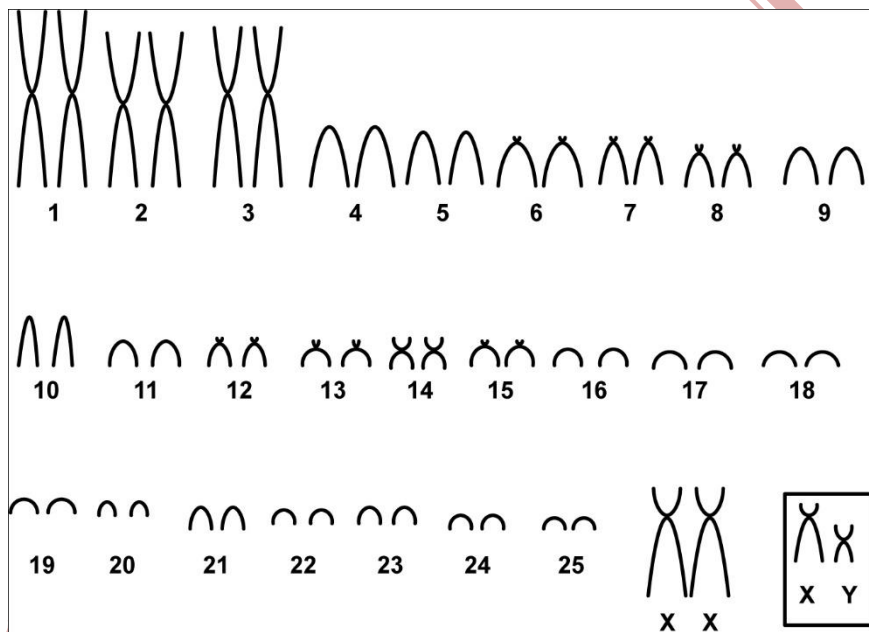


## *Holochilus magnus* Hershkovitz, 1955

Modified karyotype from Freitas *et al.* (1983)

2n	NF	X Chromosome	Y Chromosome	Locality	Coordinate
52	58	Medium submetacentric	Medium submetacentric	Ivaí River, Tupanciretã, RS - Brazil	28°56'S, 53°40' W

Conventional staining



\*C-Banding available from Freitas *et al.* (1983)

### Reference

Freitas, T. R. O., Mattevi, M. S., Oliveira, L. F. B., Souza, M. J., Yomenaga-Yassuda, Y.; Salzano, F. M., 1983. Chromosome relationships in three representatives of the genus *Holochilus* (*Rodentia, Cricetidae*) from Brazil. *Genetica*, Vol. 61, Issue 1, pp. 13 – 20.

### Link

[http://www.researchgate.net/publication/246946474\\_Chromosome\\_relationships\\_in\\_three\\_representatives\\_of\\_the\\_genus\\_Holochilus\\_\(Rodentia\\_Cricetidae\)\\_from\\_Brazil](http://www.researchgate.net/publication/246946474_Chromosome_relationships_in_three_representatives_of_the_genus_Holochilus_(Rodentia_Cricetidae)_from_Brazil)