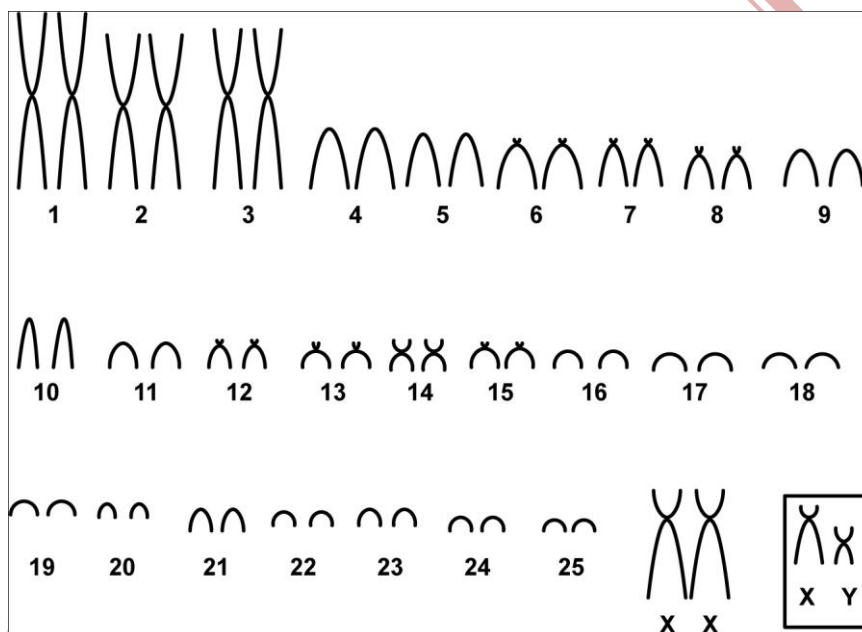


Holochilus magnus Hershkovitz, 1955

Cariótipo modificado de Freitas *et al.* (1983)

2n	NF	Cromossomo X	Cromossomo Y	Localidade	Coordenadas
52	58	Submetacêntrico médio	Submetacêntrico médio	Rio Ivaí, Tupanciretã, RS - Brasil	28°56'S, 53°40' W

Coloração comum



*Banda C disponível em Freitas *et al.* (1983)

Referência

Freitas, T. R. O., Mattevi, M. S., Oliveira, L. F. B., Souza, M. J., Yomenaga-Yassuda, Y.; Salzano, F. M., 1983. Chromosome relationships in three representatives of the genus *Holochilus* (Rodentia, Cricetidae) from Brazil. *Genetica*, Vol. 61, Issue 1, pp. 13 – 20.

Link

[http://www.researchgate.net/publication/246946474_Chromosome_relationships_in_three_representatives_of_the_genus_Holochilus_\(Rodentia_Cricetidae\)_from_Brazil](http://www.researchgate.net/publication/246946474_Chromosome_relationships_in_three_representatives_of_the_genus_Holochilus_(Rodentia_Cricetidae)_from_Brazil)