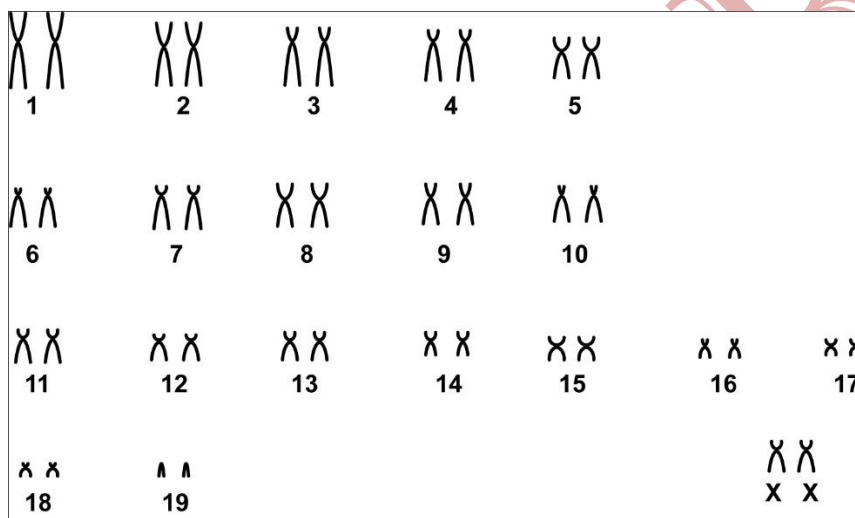


Guerlinguetus alphonsei (Thomas, 1906)

Modified karyotype from Lima & Langguth (2002)

| 2n | NF | X Chromosome | Y Chromosome | Locality |
|----|----|-----------------------|--|--------------------|
| 40 | 76 | Medium submetacentric | Buraquinho Forest, João Pessoa - PB (Brazil) | 06°07'S 34°45'W |

Conventional staining



*C-banding available in Lima & Langguth (2002)

Reference

Lima, J. S. F. & Langguth, A. 2002. **Karyotypes of Brazilian squirrels: *Sciurus spadiceus* and *Sciurus alphonsei* (Rodentia, Sciuridae).** Folia Zoologica – 51(3): 201–204.

Link

https://www.researchgate.net/publication/268358771_Karyotypes_of_Brazilian_squirrels_Sciurus_spadiceus_and_Sciurus_alphonsei_Rodentia_Sciuridae