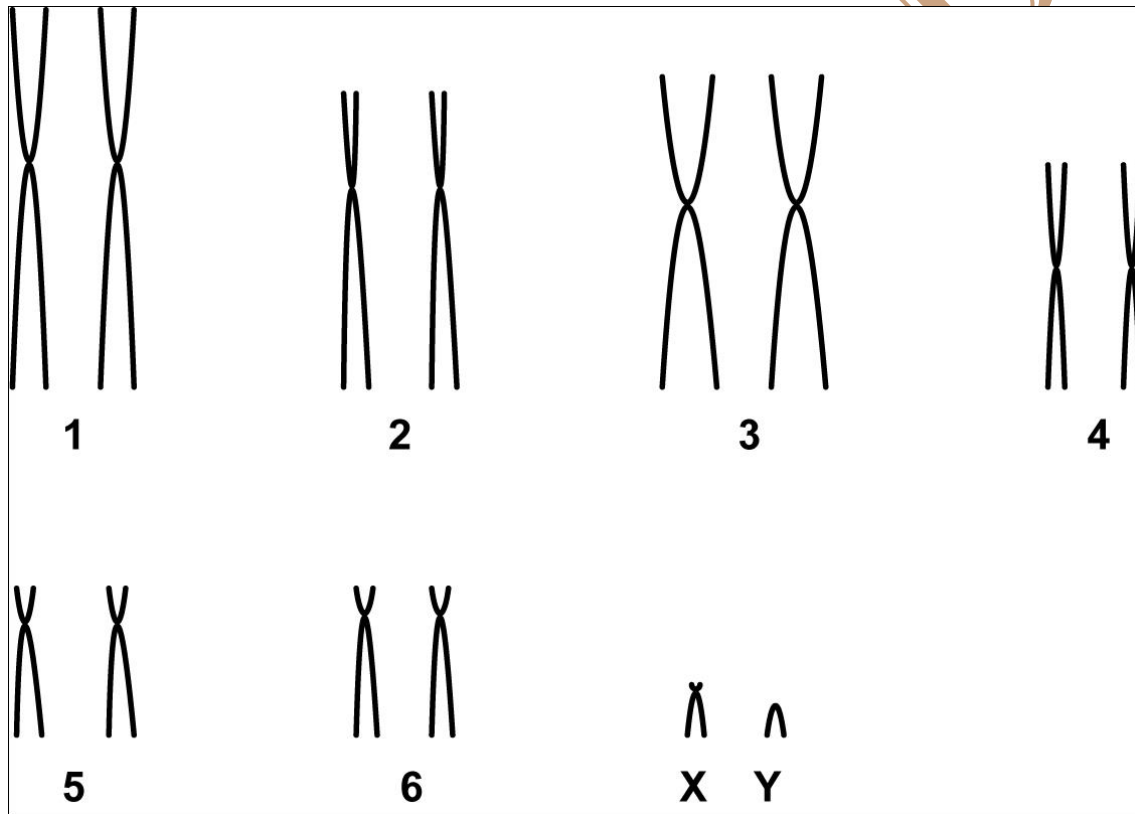


Gracilinanus microtarsus (Wagner, 1842)

Modified karyotype from Carvalho *et al.* (2002)

2n	NF	X Chromosome	Y Chromosome	Localitys	Coordinates
14	24	Small submetacentric	Small acrocentric	Tainhas - RS Charqueadas - RS Mostardas - RS (Brazil)	29°81'69"S, 50°81'89"W 29°85'89"S, 51°83'79"W 31°81'09"W, 51°83'19"W

Conventional staining



Reference

Carvalho, B. A.; Oliveira, L. F. B.; Nunes, A. P.; Mattevi, M. S. 2002. **Karyotypes of Nineteen Marsupial Species from Brazil**. *Journal of Mammalogy*, 83(1):58-70.

Link

<http://jmammal.oxfordjournals.org/content/jmammal/83/1/58.full.pdf>