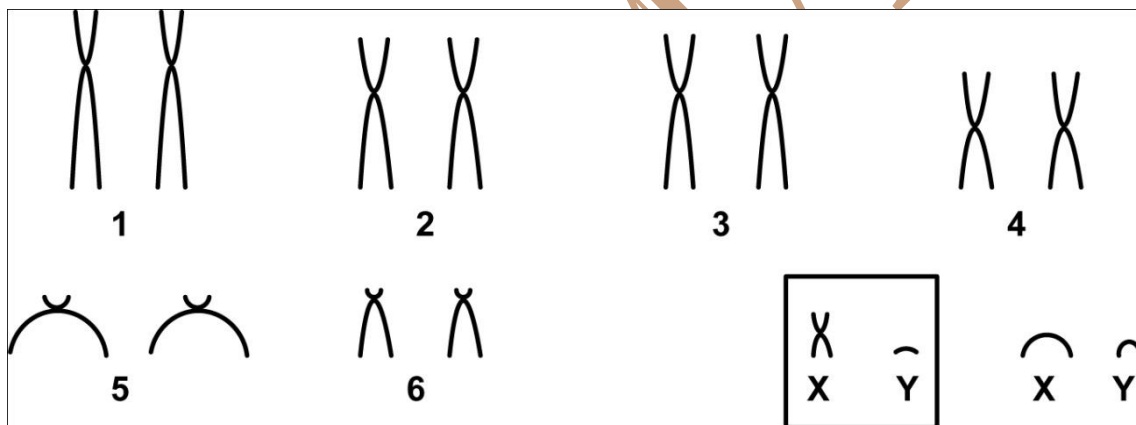


Gracilinanus emiliae (Thomas, 1909)

Modified karyotype from Carvalho *et al.* (2002)

2n	NF	X Chromosome	Y Chromosome	Localitys	Coordinates
14	24	Small metacentric	Small acrocentric	Minaçu - GO	13°83'19"S, 48°81'39"W
				Colinas do Sul - GO	14°80'99"S, 48°80'49"W
				Niquelândia - GO	14°82'89"S, 48°82'79"W
				Ipameri - GO (Brazil)	17°84'19" - 17°85'69"S, 48°82'89" - 48°83'29" W

Conventional staining



Reference

Carvalho, B. A.; Oliveira, L. F. B.; Nunes, A. P.; Mattevi, M. S. 2002. **Karyotypes of Nineteen Marsupial Species from Brazil**. *Journal of Mammalogy*, 83(1):58-70.

Link

<http://jmammal.oxfordjournals.org/content/jmammal/83/1/58.full.pdf>