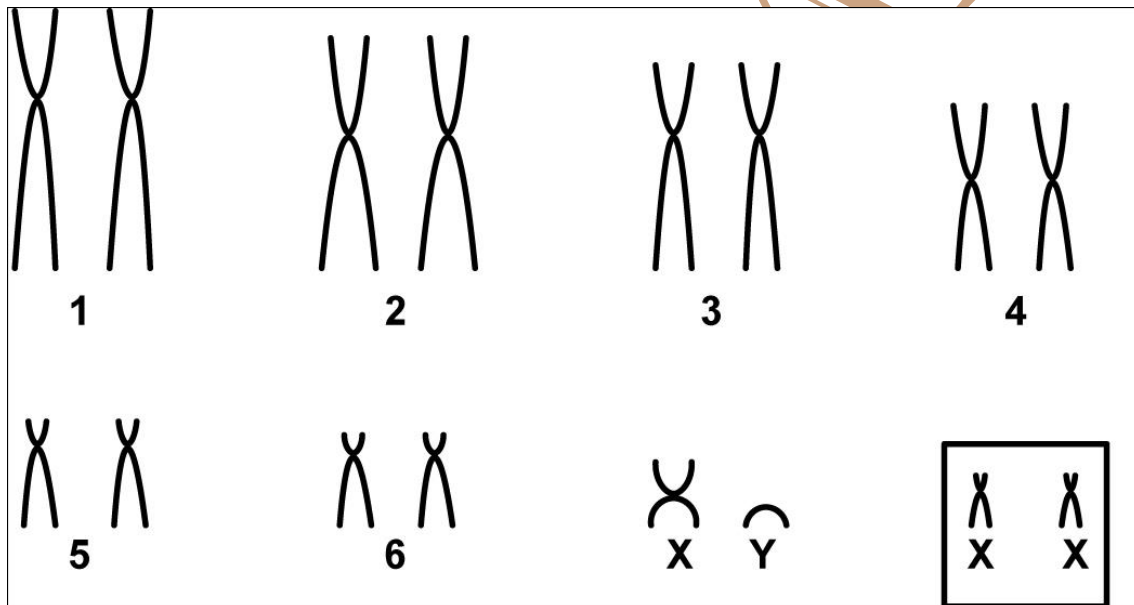


Gracilinanus agilis (Burmeister, 1854)

Modified karyotype from Carvalho *et al.* (2002)

| 2n | NF | X Chromosome | Y Chromosome | Localities | Coordinates |
|----|----|-------------------|-------------------|---|--|
| 14 | 24 | Small metacentric | Small acrocentric | Mambaí - GO Lagoa Santa - MG (Brazil) | 14°82'99"S, 46°80'69"W 19°83'79"S, 43°85'39"W |

Conventional staining



Reference

Carvalho, B. A.; Oliveira, L. F. B.; Nunes, A. P.; Mattevi, M. S. 2002. **Karyotypes of Nineteen Marsupial Species from Brazil.** *Journal of Mammalogy*, 83(1):58-70.

Link

<http://jmammal.oxfordjournals.org/content/jmammal/83/1/58.full.pdf>