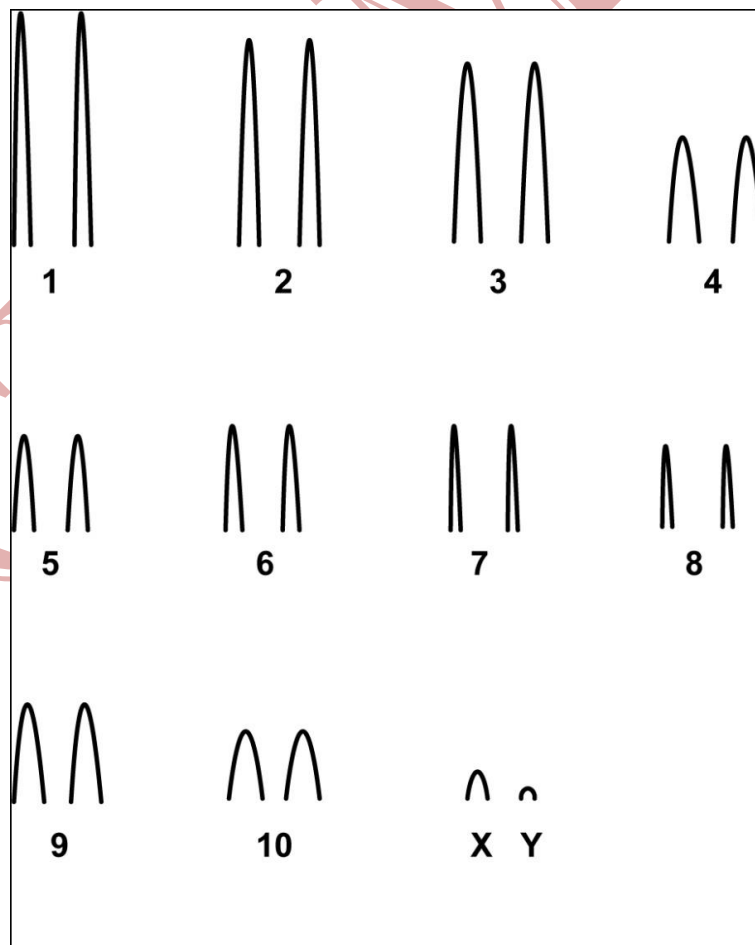


Didelphis marsupialis Linnaeus, 1758

Modified karyotype from Silva (2008)

2n	NF	X Chromosome	Y Chromosome	Localitys	Coordinates
22	20	Small acrocentric	Punctate	Reservoirs of the Hydroelectric of Balbina - AM	01°55' S, 59°28' W
				Forest Refinery of Manaus - AM	03°08'S, 59°57'W
				State Park South Sector Rio Negro - AM	02°47'S, 60° 27'W

Conventional staining



*C-Banding and G-Banding available from Silva (2008)

Reference

Silva, C. E. F. 2008. **Citogenética de cinco espécies de pequenos mamíferos não voadores de três localidades na Amazônia Central**. Universidade Federal do Amazonas, Manaus, AM.

Link

http://www.livrosgratis.com.br/arquivos_livros/cp063383.pdf

CIPEMAB