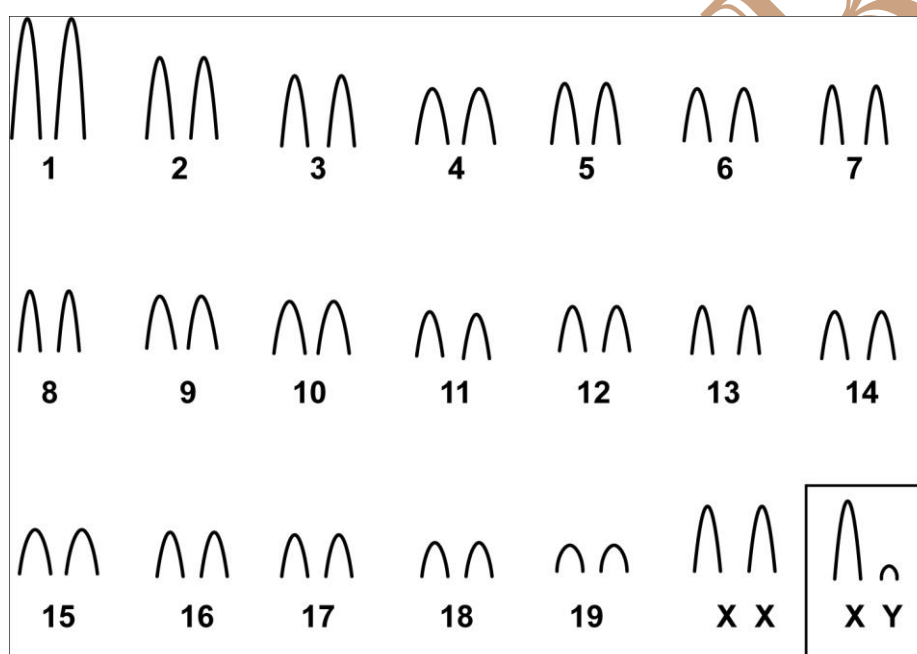


Deltamys sp. Thomas, 1917

Cariótipo modificado de Ventura *et al.* (2011)

2n	NF	Cromossomo X	Cromossomo Y	Localidade	Coordenada
40	40	Acrocêntrico médio	Acrocêntrico pequeno	Esmeralda, RS (Brasil)	28°03' S; 51°11' W

Coloração Comum



Bandas C e G disponíveis em Ventura *et al.* (2011)

Referência

Ventura, K.; Fagundes, V.; D'Elía, G.; Christoff, A.U. & Yonenaga-Yassuda, Y. 2011. A New Allopatric Lineage of the Rodent *Deltamys* (Rodentia: Sigmodontinae) and the Chromosomal Evolution in *Deltamys kempi* and *Deltamys sp.* Cytogenetic Genome Res 135:126–134.

Link

[http://www.researchgate.net/publication/51658157 A New Allopatric Lineage of the Rodent *Deltamys* \(Rodentia Sigmodontinae\) and the Chromosomal Evolution in *Deltamys kempi* and *Deltamys sp.*](http://www.researchgate.net/publication/51658157_A_New_Allopatric_Lineage_of_the_Rodent_Deltamys_(Rodentia_Sigmodontinae)_and_the_Chromosomal_Evolution_in_Deltamys_kempi_and_Deltamys_sp)