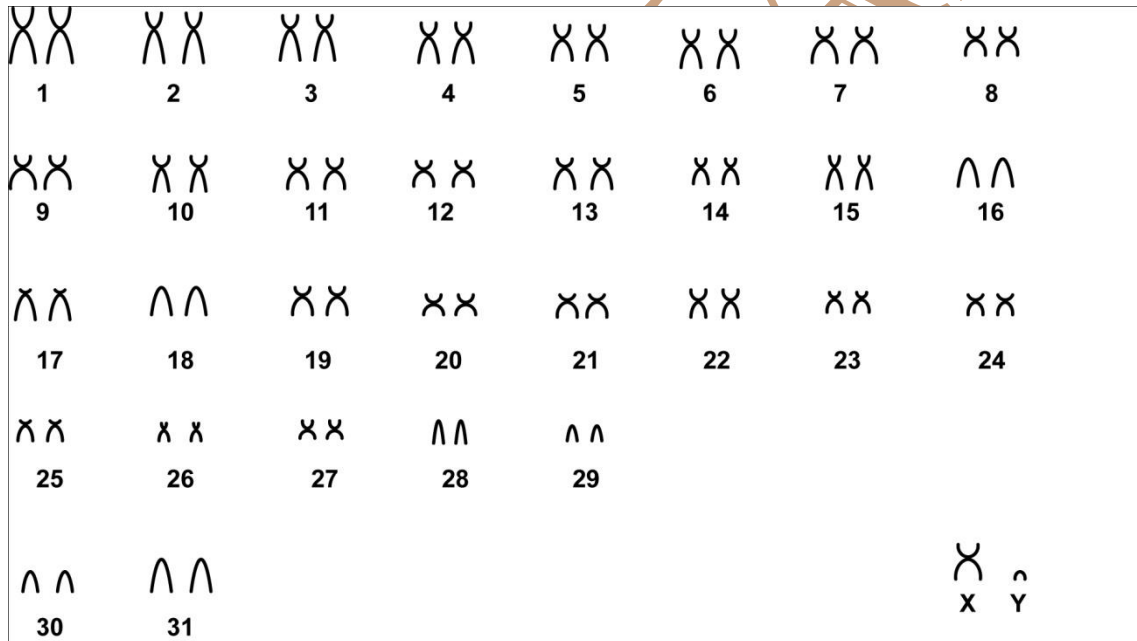


# *Dasyprocta azarae* Lichtenstein, 1823

Modified karyotype from Souza *et al.* (2007)

2n	NF	X Chromosome	Y Chromosome	Locality	Coordinate
64	122	Medium metacentric	Small acrocentric	Private Reservation of Natural Heritage SESC-Pantanal, Barão de Melgaço - MT (Brazil)	16° 28' 24.9" S and 16° 48' 43.6" S; 56° 01' 37.6" W and 56° 28' 49.4" W

Conventional staining



\*C-Banding available in Souza *et al.* (2007)

### Reference

Souza, A. L. G.; Corrêa, M. M. O.; Pessôa, L. M. 2007. **The First Description of the Karyotype of *Dasyprocta azarae* Lichtenstein, 1823 (Rodentia, Dasyproctidae) from Brazil.** *Mastozoologia Neotropical* 14 (2): 227-233, Mendoza.

Link

<http://www.scielo.org.ar/pdf/mznt/v14n2/v14n2a06.pdf>

CIPEMAB